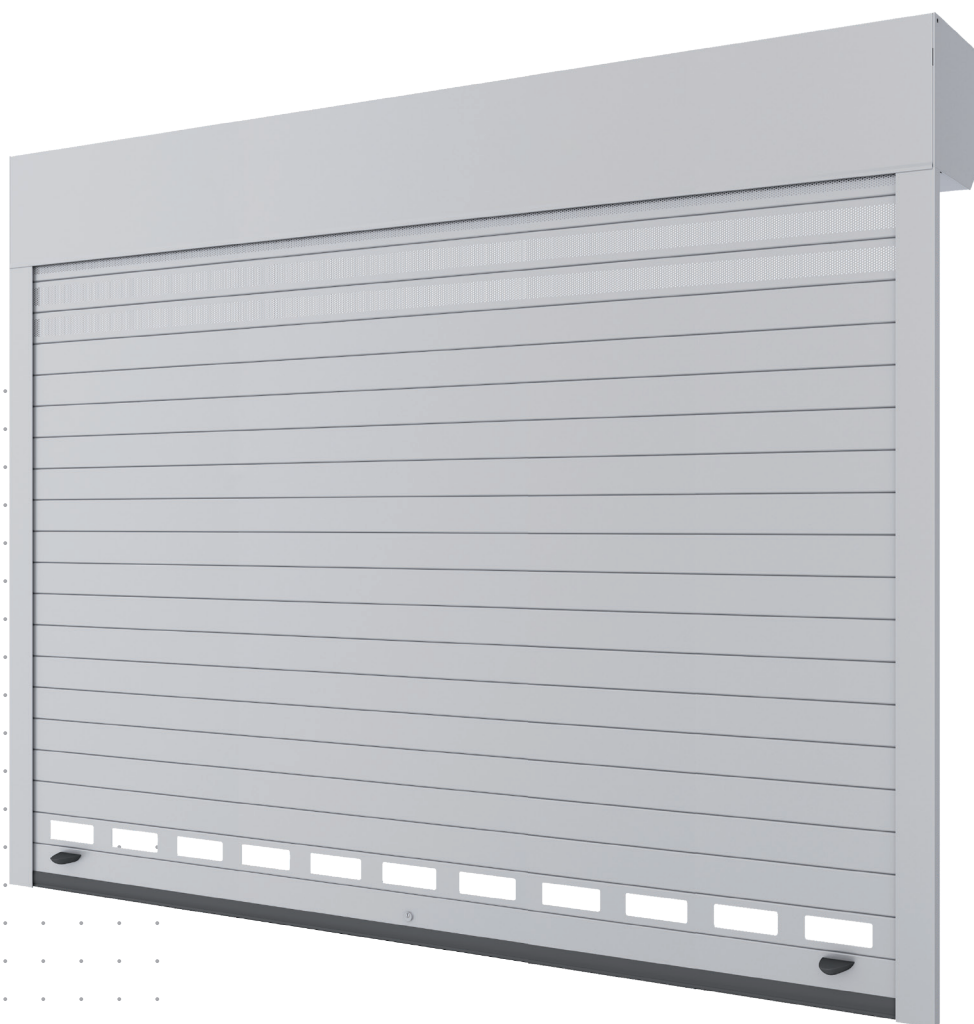


**Installation, control, use and
maintenance manual**

Rolling Doors



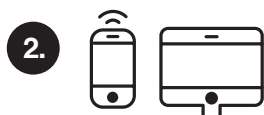


Download all information about Rolling Doors

This manual has been prepared with the main purpose of providing you with all the necessary information to correctly install, use and maintain your newly-purchased door, in order to ensure maximum safety and guarantee a long product life.



1.
Scan
and view



2.
Digital devices



3.
Easy
installation



<https://bit.ly/3yhB9hj>

Documentation that you will find in the following QR link

1. Antidrop
2. Sensitive band
3. Photosensitive cell
4. Switchboards
5. Pressure sensitive device
6. Control devices
7. Documents
8. Motor

Table of Contents

1. General recommendations regarding safety, use and restrictions.	4
1.1 For the installer	4
1.2 For the User	5
2. Installation	5
2.1 Technical characteristics	5
2.2 Tools and equipment required for assembly	5
2.3 Preparation and installation of guides and brackets	6
2.4 Preparation and installation of the shaft	6
2.5 Installation of the curtain	8
2.6 Installation of automation	9
3. Operating instructions	9
3.1 Manual doors	9
3.2 Motorised doors	9
3.3. Warnings for correct operation.	9
3.4 Manual emergency operation	9
4. Door maintenance and repair	10
5. Disassembly	10
6. Warranty	11
 Control and inspection before and during the start-up of the doors	 12
Maintenance report	13
Declaration of conformity	15
 Annex V Disassembly and disposal of the packaging and components of the product at the end of its useful life	 17

We take great pride in the fact you have chosen a **Saxun** product.

This manual has been prepared with the main purpose of providing you with all the necessary information to correctly install, use and maintain your newly-purchased door, in order to ensure maximum safety and guarantee a long product life.

We strongly recommend that you carefully read the recommendations contained in this manual, which will inform you about the safety, use and maintenance of the installation.

Only a the correct installation and maintenance, carried out by a professional, can ensure the safety and reliable operation of this product.

Therefore, it is the responsibility of both the installer/fitter and the user to follow the contents of this instruction, as it applies to them. .

1. General recommendations regarding safety, use and restrictions.

1.1 For the installer

Before the assembly, it is very important for your safety and that of the door to follow all the recommendations listed below. A poor installation may cause harm to people or the installation itself.

After unpacking and checking the integrity the product, and before beginning the installation, the installer will need to check that they have all the components and tools required for the correct installation. In case of doubt, contact Saxun's technical department.

Under no circumstances should a worn or damaged product be installed, as it may cause further damage to the installation itself, as well as create dangerous situations for people.

These systems are exclusively intended to be used for the purpose they were designed, i.e. as doors in industrial and commercial premises or residential garages, their main purpose being to provide safety of access. Any other use is inappropriate, and therefore dangerous.

Installation of the system must always be performed by a professional fitter, respecting the manufacturer's instructions, as well as having knowledge of and applying all the regulations in force.



Important

In case of a power operated product, the existing voltage must be checked before installation.

The connection must always be a grounded connection. Otherwise, do not continue the installation as it may be dangerous.

Should any damage and/or a system malfunction be detected, **do not continue** with the installation.

The manufacturer will not be liable for damage caused during the installation due to non-compliance with these recommendations.

1.2 For the User

It is very important for your safety to follow all the instructions and recommendations given in this manual.

The operation of this type of door requires special efforts and can be a source of danger. Therefore, it is advisable not to get in the way of any moving parts while it is in operation; before going through the door, it must have stopped completely.

Do not allow children to fiddle with the door components or operate it.

Do not try to oppose the door movement as it can cause serious injury.

Do not force any of the installation components.

Do not carry out any manoeuvres in windy conditions.

Inform all users of this installation about these warnings.

In case of breakdown, inform a qualified professional.

To guarantee the safety and durability of this product, it is of great importance that adequate maintenance is performed by a qualified professional. To carry out any maintenance please refer to the maintenance **section** of this instruction.

The end user should be aware, that continuous operation of the motor by raising and lowering the door repeatedly for several minutes will cause the motor to overheat. For the motor's own self-protection, we have included a thermal protector that temporarily switches it off at high temperatures until it cools down. The motor will run normally again after a few minutes, thus avoiding total breakdown.

In the case of **automatic doors** an anti-crushing protection system, required by the regulations, is considered a maximum safety measure. This protection involves incorporating a device in the lower part of the end slat to detect and avoid possible crushing. This device makes the motor move the door immediately upwards upon contact with an object..

For this reason, the user is advised to check that the door is fully closed, as there is a possibility that it may stay open if an obstacle is encountered during descent, allowing free access to the house, shop, etc.

2. Installation

Make sure that the surface where the door is to be installed is smooth and has sufficient load capacity.

2.1 Technical characteristics

Each door comes with documentation and a detailed description of all the system's components. Only these components can be used for the operation of the door.

In our desire to simplify commercial or garage door systems, etc., we supply the door assembly as compact and simplified as possible, creating a customised assembly kit. Therefore, it is advisable to consider the assembly as though it were a kit.

2.2 Tools and equipment required for assembly

- Spirit level.
- Drill/drill bits.
- Drill bits suitable for the blocks to be used.
- Plugs suitable for the surface onto which the installation will be fitted.
- Pliers and screwdrivers.
- Open spanners.
- Jacks.
- Electric cable.

2.3 Preparation and installation of guides and brackets

- Fix the sliding rails using the screws on the top of the guide entries. It is recommended to open the guides with a small cut to avoid friction with the slats both during the ascent and descent.

- Screw the brackets to the guide when using the **PS guide angle**.

If end caps are used, locate their legs in the guide housing, bearing in mind that the three marks inside the guides must be pointing towards the outside of the door.

- The height of the guides with **adjustable brackets** will be: the total height minus 230 mm. (cut the guides if deemed appropriate) or the height of the light plus 50mm
- Since the brackets must support the entire weight of the doors, it is recommended to fix them tightly with screws, masonry or welding, depending on the type of base on which they are to be fitted.
- Fix the guides tightly to the wall or surface where they are to be fitted with screws or masonry, ensuring that they are always levelled.
- The height of the guides with **PS guide brackets** will be: the total height minus 230 mm. (cut the guides if deemed appropriate) or the height of the light plus 50mm
- The height of the guides with **end caps** will be: the total height minus the end cap or the light measurement plus the end cap.
- The height of the guides with **adjustable brackets** will be: the total height minus 230 mm. (cut the guides if deemed appropriate) or the height of the light plus 50mm
- Since the brackets must support the entire weight of the doors, it is recommended to fix them tightly with screws, masonry or by welding, depending on the type of base where they are to be fitted.
- Install the motor mount, the **“U”-mount** or the fall prevention system on the brackets or end caps with the screws provided by the manufacturer.
- On the shaft label we have the approximate diameter of the roll to calculate where the mounts should be placed on the brackets.

2.4 Preparation and installation of the shaft

2.4.1 When its lifting system is a **tubular motor**

- The shaft will always be cut to length.
- Always install the rings of the self-locking spring locks in the same position.
- Insert the motor into the shaft and fit with the screw provided by the manufacturer, install the motor mount if necessary and then install the ferrule.
- Place the shaft between the bracket or end caps and fix with the hardware supplied by the manufacturer.
- The shaft will always be mechanised on the engine side. If it has end caps, it will be always cut to the exact size. And if it has adjustable brackets, the shaft will be cut 200 mm longer than the total door measurement so that the fitter can cut it to the required size, depending on the position of the brackets.
- **If it has a fall prevention system and PS guide bracket or end caps, the ferrule should be fixed behind the bracket or the end cap with a washer and a screw. Sealant should be applied to the screw to block the thread.**

Figure 1 Rolling door with strap shaft

-
- 1 Aluminium guide
 - 2 Nylon caps
 - 3 Shutter curtain
 - 4 End slat gomme
 - 5 Metal-plastic buffer PS
 - 6 Lock (manual)
 - 7 Shaft support
 - 8 Strap shaft
 - 9 Central motor (motorised)
 - 10 Metal pulley
-

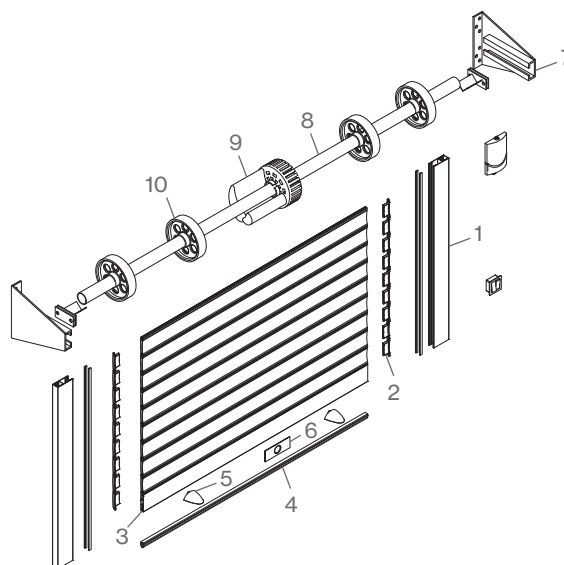


Figure 2 Rolling door with box and tubular motor

-
- 1 Aluminium guide
 - 2 Nylon plugs
 - 3 Shutter curtain
 - 4 End slat gomme
 - 5 Sliding rail
 - 6 Switch
 - 7 Controller
 - 8 Guide bases box set
 - 9 Safety break system
 - 10 Ferrule tube
 - 11 Curtain spring lock
 - 12 Box
 - 13 Round metallic shaft
 - 14 Motor
-

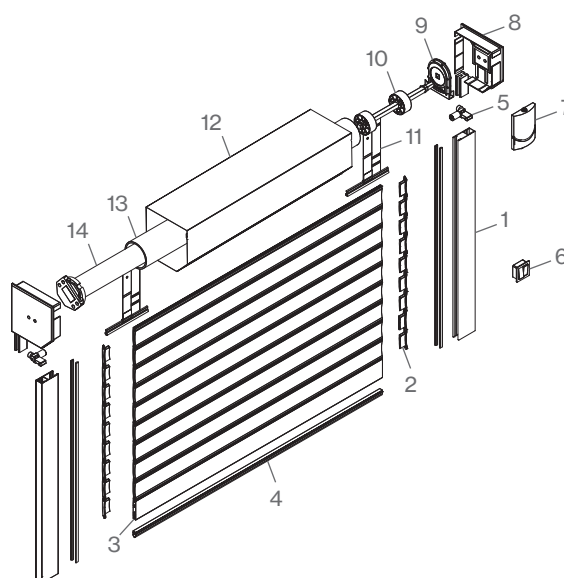
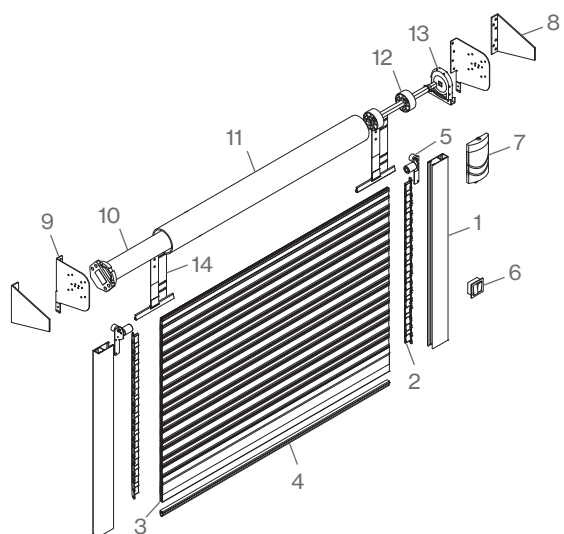


Figure 3 Rolling door with brackets and tubular motor

-
- 1 Aluminium guide
 - 2 Nylon plugs
 - 3 Shutter curtain
 - 4 End slat gomme
 - 5 PS funnel guide
 - 6 Switch
 - 7 Controller
 - 8 Reinforcement bracket
 - 9 PS guide bracket
 - 10 Motor
 - 11 Round metallic shaft
 - 12 Ferrule tube
 - 13 Safety break system
 - 14 Curtain spring lock
-



2.4.2 If it's lifting system is **strap shaft**

- The pulleys will be provided with the appropriate number of turns at the height of the shutter. The left pulley will always be marked in red and the right pulley in blue, making it easier to differentiate both sides.



STEP 1



STEP 2



STEP 3

2.5 Installation of the curtain

2.5.1 When its lifting system is a **tubular motor**

- Due to the high weight of the rolling doors, we recommend caution when handling and installing them to avoid blows and frictions. We recommend that our clients use the engine aid in order to insert the door in the guides, as it will avoid unnecessary damage and effort.
- The doors will be rolled with the end slat inside in order to be installed with belts due to their high weight and with the aid of the motor (unless the fitter states otherwise due to the circumstances of the installation). When its weight is less than 50kg, the end slat will be left outside in order to slide it through the guides.
- Do not install any automation before making the adjustments to the limit switches, and use the regulator recommended by the manufacturer.
- Place the rolled door inside one of the shaft suspended tapes in the correct rolling direction. Turn the motor downwards until it reaches its limit switch, adjust the limit switch and attach the spring locks to the rings.
- With the aid of the motor, raise the door until it is fully rolled onto the shaft.
- Insert the end slat into the guides and adjust the rising limit switch so that the end slat is in the desired position. Then lower the door and adjust the lowering limit switch so that the self-locking spring locks function correctly.
- Caution should be taken with the spring locks fixing screws on the spring locks. It is recommended to use shorter screws to avoid friction on the engine. Always use the screws provided by the manufacturer.

2.5.2 If it's lifting system is **strap shaft**

- Place the curtain on top of some trestles. Slide the end slat through the guides until the shutter rests on the floor.
- Protect the pulleys and screws to avoid damaging the curtain.
- Then insert the spring locks with the protections and attach them to the pulleys.
- If the shutter is power operated, do not install any automation before making the adjustments to the limit switches, and use the regulator recommended by the manufacturer.
- Press the down button to regulate the limit switch. When the door is fully lowered the screw housing of the starter ring must match the last curtain slat.
- Caution, making sure the motor is locked, release the pulley bolts to raise the curtain and install the stoppers.
- Hold the last slat to the starter ring and press the up button to regulate the limit switch.



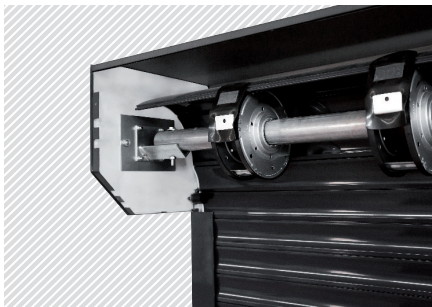
STEP 4



STEP 5



STEP 6



STEP 7

2.6 Installation of automation

- Carefully follow the assembly instructions for each automation provided by the manufacturer.

We recommend following all the above steps, since its perfect operation, possible damage and durability of the shutter depend on this.

3. Operating instructions

3.1 Manual doors

To open the manual doors, release the door from its latches and exert pressure in the opening direction.

3.2 Motorised doors

In the case of doors with controls, operate the control following the steps of the installer.

In the case of power operated doors with a key, insert the key into the automatic opening control and turn it to the door opening position.

3.3. Warnings for correct operation.

Do not deactivate any of the safety systems that come with the product, otherwise, it is recommended to advise the final consumer of other additional safety systems that the regulation does not include as a requirement and that will benefit the safety of the installation.

The user is prohibited from modifying the operating devices.

The installer has to explain the product operation to the end user, as well as the parts that should not be handled, who to call in case of failure, and list all the alternative operations available.

3.4 Manual emergency operation

If this device has been installed, it is possible to find several models:

- Emergency operation on spring shaft doors. In this case, unlock the motor clutch and activate the shutter as mentioned in section 3.1.
- Emergency activation on tubular shaft doors. In this case, turn the handle until the door is opened.

4. Door maintenance and repair

Responsibility and obligation for the maintenance of the door lies with the owner, unless otherwise agreed in writing.

Therefore, we recommend ensuring that the system is only used when in perfect condition and that a professional regularly inspects the correct operation and safety devices, whenever necessary, and at least once a year, records such inspections.

At the end of this manual, you will find a small maintenance record, where you can record the minor checks that **Saxun** recommends you perform annually.

You must hold proof of these inspections. During maintenance, emphasis will be placed on performing a specific inspection of the safety components, in addition to those parts which, due to their use, are susceptible to wear.

In case of any doubt about incorrect door operation, contact the fitter.

It is advisable that the user does not to perform any manoeuvre to improve the performance, or to lubricate the parts of any component that does not have friction, as this must be done by a professional and at certain points of the installation.

The general inspection of spring locks and bolts must be completed once a year.

Clean regularly with water and neutral soap to avoid degradation of lacquering due to mechanical friction or chemical action.

5. Disassembly

Before disassembly, protect the door access area.

Rely on professionals to disassemble it.

Keep unauthorised people at a safe distance.

Use the right tools and make sure the floor is not slippery.

Complete the operations described in the assembly **section in the reverse order**: remove the curtain, dismantle shafts, box, guides...

6. Warranty

Saxun guarantees all its defective parts or components for two years, excluding the installation, visits or labour.

Warranty for this product will be void in the case of damage caused to the it due to a lack of knowledge of the product or of the instruction manuals.

The supplied product will not be guaranteed if installation modifications are made or components not supplied by our company are incorporated.

Warranty will be void in case of improper handling of the product as a whole, either manual or electric.

The product guarantee will be void if the entire system or its components are not properly maintained.

The product guarantee will be void if any of the components we supply are altered or changed.

The product guarantee will be void if any of the suggestions or recommendations given in this manual are not followed.

Saxun will not be liable for any problems caused due to modifications in the construction of the door on the user's own initiative.

Complete the operations described in the Assembly section in the reverse order: disassemble the curtain, shafts, box, guides...

Control and inspection before and during the start-up of the doors

Details of the buyer			
Name			
Address			
Town		Telephone	
Details of the installer			
Name			
Address			
Town		Telephone	
Manufacturer / product details (details on product label)			
Manufacturer's name		Giménez Ganga, S.L.U. Polígono Industrial El Castillo. C/ Roma, 4 03630 Sax (Alicante)	
Location reference of the door			
Date Installation		Model Industrial door	
Resistant to wind load	Class <input type="checkbox"/>	Door identification No.	Year of Manufacture
Type of Motor	<input type="checkbox"/> Central <input type="checkbox"/> Tubular	Has safety devices	<input type="checkbox"/> YES <input type="checkbox"/> NO
If it has device. Description of the safety system			
If it does not have a device, state the type of operation			
The installation could not be completed due to:			
Observations:			

OWNER SIGNATURE

INSTALLER SIGNATURE

*By signing this document you agree that you have received all the information in this manual and agree to the conformity of the installation

Maintenance report

Maintenance company details			
Name		Telephone	
Address		Town	
Inspection control			
Inspection date		Scheduled date	
		Next inspection	
Controls	Correct	Incorrect	Observations
Check the fixing structure of the door (screw tightening)			
Check the door opens and closes properly			
Check the safety system operation			
Check the manual emergency control mechanism if it has one			
Lubrication of mechanical parts (greases or oils recommended)			
Check the smooth operation of the manual door and if necessary adjust the tension of the springs			

Maintenance company details			
Name		Telephone	
Address		Town	
Inspection control			
Inspection date		Scheduled date	
		Next inspection	
Controls	Correct	Incorrect	Observations
Check the fixing structure of the door (screw tightening)			
Check the door opens and closes properly			
Check the safety system operation			
Check the manual emergency control mechanism if it has one			
Lubrication of mechanical parts (greases or oils recommended)			
Check the smooth operation of the manual door and if necessary adjust the tension of the springs			

Maintenance report

Maintenance company details			
Name		Telephone	
Address		Town	
Inspection control			
Inspection date		Scheduled date Next inspection	
Controls	Correct	Incorrect	Observations
Check the fixing structure of the door (screw tightening)			
Check the door opens and closes properly			
Check the safety system operation			
Check the manual emergency control mechanism if it has one			
Lubrication of mechanical parts (greases or oils recommended)			
Check the smooth operation of the manual door and if necessary adjust the tension of the springs			

Maintenance company details			
Name		Telephone	
Address		Town	
Inspection control			
Inspection date		Scheduled date Next inspection	
Controls	Correct	Incorrect	Observations
Check the fixing structure of the door (screw tightening)			
Check the door opens and closes properly			
Check the safety system operation			
Check the manual emergency control mechanism if it has one			
Lubrication of mechanical parts (greases or oils recommended)			
Check the smooth operation of the manual door and if necessary adjust the tension of the springs			



Polígono Industrial El Castillo
C/ Roma, 4 • 03630 • Sax (Alicante) • Spain
T. +34 965 474 050 • 965 474 205
F. +34 965 474 563
saxun.com

At Sax, 1 April 2022

Declaration of conformity

(Pursuant to Directive 2006/42/EC relating to machinery)

Who, in turn, is the legal person empowered to compile the Technical Record,

Declares that the industrial, commercial or garage, and gates of models:

PS-55, PS-65 AUTO., PS-78, PS-79, PS-79 Tubular, PS-80 AUTO., PS-100, PS-100 Tubular, PS-110, PS-64, PS-53, PS-85 R, PS-100 R.

Comply with the applicable provisions of **Directive 2006/42/EC**.

And have been developed and manufactured in compliance with chapters **EN 13241:2003+A2:2016** that are listed in **ANNEX ZC** and give presumption of conformity with the aforementioned **Directive 2006/42/EC**.

In addition to its development and manufacture, **European Construction Products Regulation No. 305/2011** is fulfilled and, insofar as applicable to the activation system into which they are installed, complies with the following directives:

- **Directive 2014/30/EU - Electromagnetic compatibility.**
- **Directive 2014/35/EU - Low voltage.**
- **Directive 2014/53/EU - Radio equipment and telecommunications terminals.**
- Directive 2011/65/EU - RoHS.**

The following standards have been applied to assess conformity, depending on the drive system they equip:

- EN 60335-1:2012 + A1:2019 + A11:2014 + A13:2017 + A14:2019 + A2:2019; EN 60335-2-103:2015;
- EN 60335-2:95:2015+A1:2015
- EN 62233:2008; EN 62479:2010
- EN 61000-6-3:2007 + A1:2011; EN IEC 61000-6-2:2019
- EN 300220-1 V3.1.1:2017; EN 300220-2 V3.1.1:2017; EN 300220-2 V3.2.1:2018
- EN IEC 63000:2018
- EN 60335-1:2002 + A1:2004 + A11:2004 + A12:2006 + A13:2008 + A14:2010 + A15:2011 + A2:2006
- EN 60335-2-103:2003 + A11:2009
- EN 62233:2008
- EN 61000-6-2:2005; EN 61000-6-3:2007 + A1:2011



Signed: Francisco Giménez Pla
Head of CE Marking

DdP No.	Product identification
PS/01/2013	PS-55
PS/02/2013	PS-65 Auto.
PS/03/2013	PS-65 Auto.
PS/05/2013	PS-78
PS/06/2013	PS-78
PS/07/2013	PS-79
PS/08/2013	PS-79
PS/09/2013	PS-80 Auto.
PS/10/2013	PS-80 Auto.
PS/11/2013	PS-100
PS/12/2013	PS-100
PS/13/2013	PS-100 Tubular
PS/14/2013	PS-100 Tubular
PS/15/2013	PS-110
PS/16/2013	PS-64
PS/17/2013	PS-53
PS/18/2013	PS-85 R
PS/19/2013	PS-100 R

Annex V **Disassembly and disposal of the packaging and components of the product at the end of its useful life**

Disposal of packaging

Important

The packaging must be recycled by the authorised professional who installed the product.

We advise you to recycle the product packaging responsibly:

- Please dispose of this waste in accordance with the current regulations:
 - Directive 94/62/EC on packaging and packaging waste.
 - Spanish Law 11/1997 of April 24th on packaging and packaging waste.
- Please sort the waste by separating each and every one of the various materials, to facilitate effective disposal of the packaging.
- Do not dispose of packaging materials together with other types of waste. Take them to a packaging materials collection point designated by the local authorities.
- In order to minimise the environmental impact of packaging and packaging waste, it is necessary to define the composition and nature of the packaging of our products to recommend their best disposal.

Paper and cardboard:

In waste management, the recycling of paper and cardboard plays an important role, because up to 70% can be reclaimed. The disposal of paper and cardboard can be done through various channels such as collection by private operators or delivery to waste treatment plants.

Plastic:

The recycling of plastics has many advantages for the environment and therefore benefits the quality of life of everyone, contributing to a greater saving of raw materials as well as natural, energy producing and economic resources. The disposal of plastic can be done by private operators or delivered to waste treatment plants.

Bubble wrap:

This is made of low density poly-ethylene, which makes it 100 % recyclable. For optimal disposal, please deliver any waste comprising this material to plastic waste treatment plants.

Our commitment to the environment

One of **Saxun's** objectives is to maintain socially responsible behaviour. This commitment to the environment implies continuous improvements in the measures that are adopted to combat climate change.

Promoting responsible care of the environment, complying with the legal and regulatory requirements applicable to our products and promoting energy saving in all our projects are measures that are essential for us to achieve our objectives.

Disassembly and removal of the product

When disassembling this product, a number of precautionary measures must be taken. Observe the following warnings and instructions. Please contact your supplier with any queries.

Disassembly may only be carried out by experienced fitters. This manual is not intended for DIY enthusiasts or installers in training.

For more information on these disassembly instructions, please refer to the chapters regarding installation in this manual that contain diagrams and detailed information.

• Step 1

Release of torsion springs.

Important

Torsion springs and base plates are under high stress. Always operate with great caution. Use appropriate tools and in perfect condition.

To start disassembling the door, close it and block the movement of the rollers with pressure pliers on the vertical guide.

First, release the tension on the torsion springs and the cable. To do this, follow these instructions:

1. Insert the first tensioning bar completely into the hole in the torsion piece.
2. Support the spring tension with the tension bar..
3. Loosen the movable torque bolts and remove the key.
4. Turn the first tensioning bar a quarter of a turn in the required direction.
5. Insert the second tensioning bar completely into the next hole in the torque piece.
6. Transfer the spring tension from the first tension bar to the second.
7. Pull the first bar out of the hole.
8. Turn the second bar a quarter of a turn in the required direction.
9. Insert the first bar all the way back into the next hole in the torque piece.
10. Now transfer the spring tension from the second bar to the first.
11. Repeat steps 4-10 until tension is completely released.
12. Remove the last tension bar.

• Step 2

Loosen the polyamide screws that fix the hood cover and, using leverage, disengage the clips in order to remove the hood lid.

• Step 3

Loosen the screws that join the load profile to the end plate to remove the end plates and plates.

• Step 4

Disconnect electrical control. Follow the instructions in the manual for the control.

• Step 5

Remove the panels one at a time from the vertical guide frame, starting with the top one. For it, loosen the hinges and rollers first.

• Step 6

Remove the shaft structure from the lintel, after having disassembled the motor from the shaft. If the shaft is broken and joined by a coupling, disassemble the coupling first and carefully remove the two halves of the shaft assembly.

Important

Beware of parts that can come off the shaft, such as cable drums, key holders.

• Step 7

Remove the vertical assemblies from the frame.

• Step 8

Be sure to dispose of all parts and panels in an environmentally friendly way. In case of doubt, consult the local authorities about the manner and place of disposal of these elements as waste.

Important

Be sure to remove all the parts that make up the product, taking into account the nature of its materials. A table of components is attached with the necessary information for correct recycling.

Our products are mainly made of recyclable materials. It is advisable to be informed about the recycling or disposal systems provided for in the current regulations in your country for this product category.

! Important

- Always act with care. Please only use suitable tools that are in perfect condition.
- Ensure that you dispose of all pieces of the product taking into account the nature of its materials.



This symbol means that the product must not be disposed of together with household waste as it must be collected separately for recovery, reuse or recycling in accordance with local regulations.



In compliance with European Directive 2012/19/EU, waste electrical and electronic equipment (WEEE) can become a serious environmental problem if not managed properly. The Directive provides the general framework valid throughout the European Union for the disposal and re-use of waste electrical and electronic equipment.

At the end of the service life of the electrical or electronic equipment, it must not be thrown away together with other types of waste. They can be delivered to the specific centres regulated for this purpose by the local authorities.

The effective separation of waste will avoid negative consequences for the environment and health that could result from poor waste management or inadequate waste disposal.

! Important

By complying with this directive, you will be acting in favour of the environment and will contribute to the conservation of natural resources and the protection of health.

Local regulations may impose significant penalties for illegal disposal of the product.

The materials that our products are made of offer a great variety of environmental advantages



Galvanised steel

Galvanised steel is a type of steel which undergoes a certain treatment, at the end of which it is coated with several layers of zinc which protect it, avoiding oxidation. The recycling of zinc helps reduce demand for new materials and as a result generates considerable energy savings, being a metal that constitutes a very valuable and sustainable resource.

For proper recycling of galvanised steel, it is advisable to visit a metal waste collection centre.



Stainless steel

Stainless steel is an iron alloy containing nickel and chromium to protect against corrosion and rust. Its qualities include resistance to high temperatures and being a particularly strong material. Stainless steel is an infinitely recyclable "green material". Its properties make it ideal for exposure to poor weather conditions.

Therefore, to ensure proper disposal of stainless steel, it is recommended that this material be left at a specialised waste collection centre.



Aluminium

Aluminium recycling guarantees an endless variety of environmental benefits. The use of recycle aluminium saves 95% of the energy used in its production in its raw state, and it can be recycled as many times as desired and is fully recoverable. Therefore, the recycling of aluminium is both technically and economically profitable.

Therefore, to ensure proper disposal of aluminium, it is recommended that this material be left at a specialised waste collection centre..



Cables

The recycling of electrical cables prevents the contamination that can come from these elements. Its re-cycling allows for the subsequent use of the copper, aluminium and brass from the cables, once they are separated from their plastic insulation.

Electrical and electronic waste must be taken to clean points for proper recycling



PET



HDPE



PVC

Plastic

Plastic recycling provides a sustainable source of raw material for the industry. Its reuse also significantly reduces environmental problems, as it is a non-biodegradable material.

Recycling reduces energy consumption and CO2 emissions, thus mitigating pollution and climate change.

There are several types of plastic, so to achieve optimal recycling it is essential to deposit them in clean points where the separation of the different types and their identification will take place.



LDPE



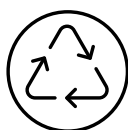
PP



PS



Other



Textiles

The use of textile waste is essential when we talk about recycling. Reuse of such waste helps to reduce the consumption of water and the gases that are released in the manufacturing process.

In order to encourage the proper disposal of textiles, it is recommended that they be left at a specialised waste centre where the different textile fibres will be separated.

! Important

Follow the recommendations for effective product recycling. Remember that recycling is more than an action; it is the value of accepting responsibility

Notes

[illegible]



Giménez Ganga, S.L.U.
Polígono Industrial El Castillo
C/ Roma, 4 • 03630
Sax (Alicante) • España

saxun.com

INSTALLATION · CONTROL, USE AND MAINTENANCE MANUAL · ROLLING DOORS · EN · 02 · '2222