






Toldo cofre

Palas



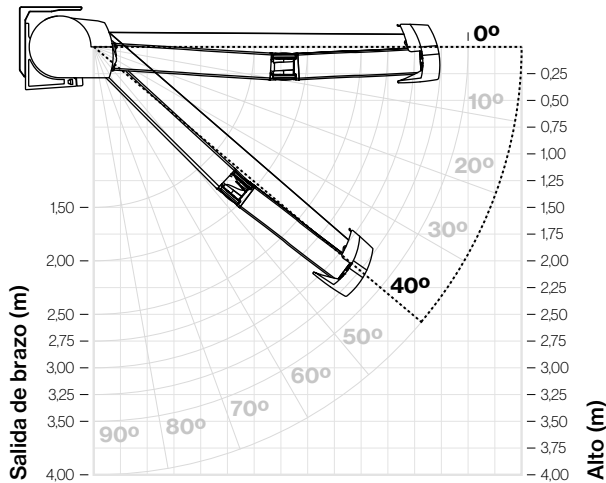
ESP 
ENG 
FRA 
ITA 
POR 



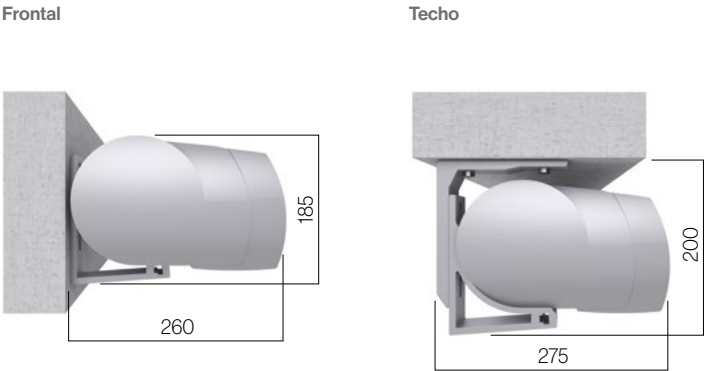
Descripción Suministro e instalación de toldo cofre modelo Palas de “Saxun” para instalación a pared o techo, compuesto por lona extensible mediante brazos articulados y barra de carga ambos de aluminio extrusionado, eje de enrollado pivotante sobre tubo de enrollado de 80 mm para alojamiento de motorización que pivota sobre dos testeros laterales de aluminio inyectado. Todo ello alojado en un cofre de aluminio extrusionado de dimensiones 185x260 mm con acabado lacado Ral o lacado madera. Accionamiento motorizado mediante motor tubular y mando inalámbrico.

Grados de inclinación

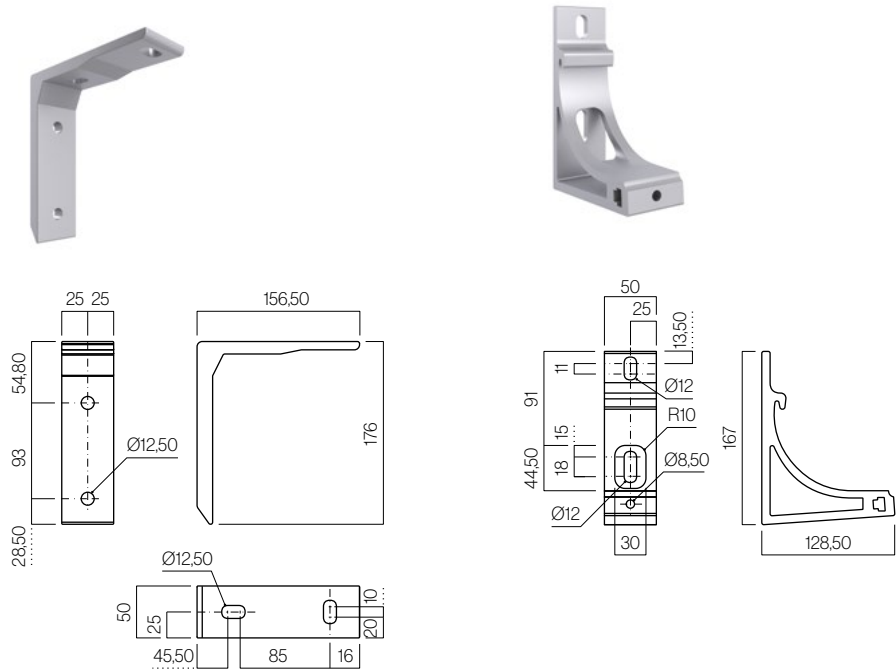
Según el tipo de instalación	
Frontal	0° a 40°



Tipos de sujeción



Soportes



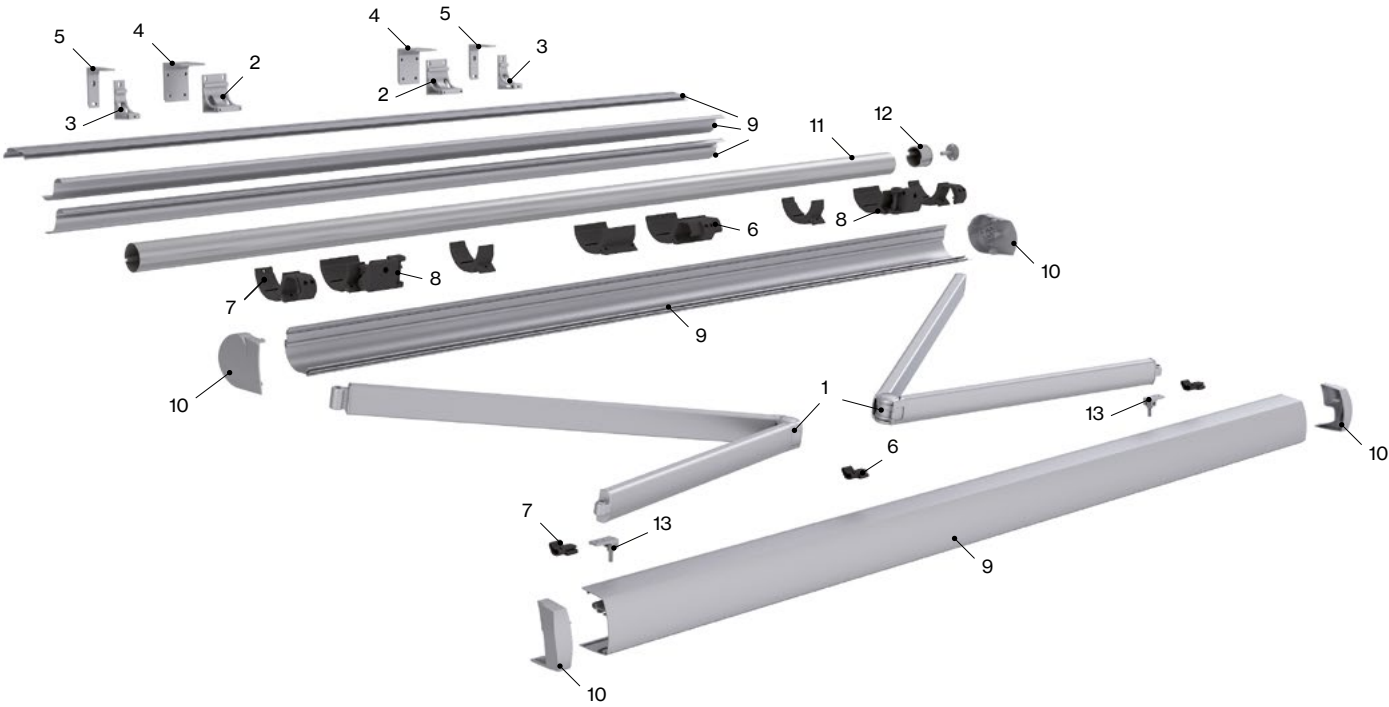
Medidas en mm.

Ensayos

Resistencia al viento: Clase 2 según la norma EN 13561:2004+A1:2008.

Salida	Línea									
	2 Brazos							3 Brazos		
	3,00	3,50	4,00	4,50	5,00	5,50	6,00	6,50	7,00	
1,60	2	2	2	2	2	2	2	2	2	
1,85	2	2	2	2	2	2	2	2	2	
2,10	2	2	2	2	2	2	2	2	2	
2,35	2	2	2	2	2	2	2	2	2	
2,60	2	2	2	2	2	2	2	2	2	
2,85		2	2	2	2	2	2	2	2	
3,10			2	2	2	2	2	2	2	
3,35			2	2	2	2	2	2	2	
3,60				2	2	2	2	2	2	

Clase 2 ≈ 38 Km/h



Componentes

Nº Descripción	Nº Descripción
1 Jgo. brazos cadena	8 Kit soporte brazo replegable
2 Jgo. soportes a pared 120 mm	9 Kit de perfiles cofre
3 Jgo. soportes a pared 50 mm	10 Kit tapas cofre y terminal
4 Jgo. soportes a techo 120 mm	11 Tubo de enrollle 80
5 Jgo. soportes a techo 50 mm	12 Casquillo nylon ø80 hueco ø14 y cojinete
6 Kit de ajuste para cofre 120 mm	13 Jgo. regletas brazo
7 Kit de ajuste para cofre 50 mm	

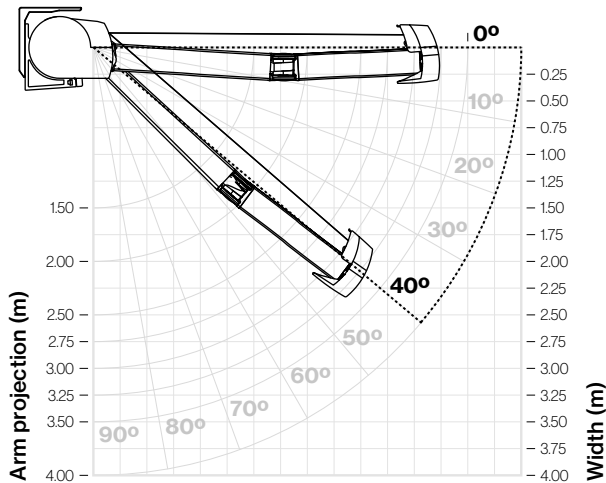


Description

Supply and installation of “Saxun” Palas model cassette awning for wall or ceiling installation, consisting of an extendible fabric with articulated arms and load bar, both made of extruded aluminium, pivoting roll-up shaft on 80 mm roll-up tube for motorisation housing that pivots on two injected aluminium side end caps. All housed in a extruded aluminium box measuring 185 x 260 mm, with RAL lacquer finish or wood lacquered finish. Motorised drive by tubular motor and wireless control.

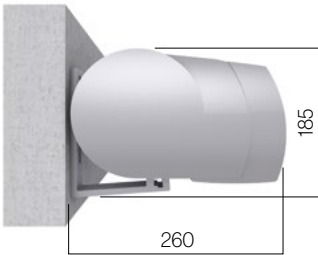
Degrees of inclination

Depending on the type of installation	
Front installation	0° a 40°

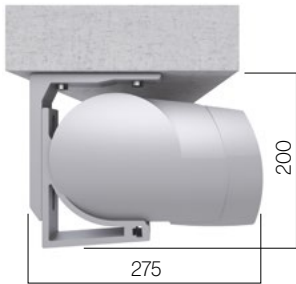


Tipes of fixing

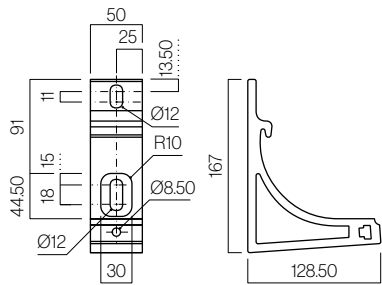
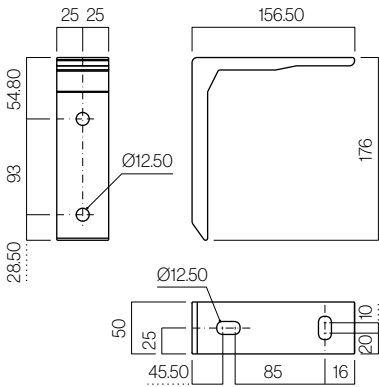
Frontal



Ceiling



Supports



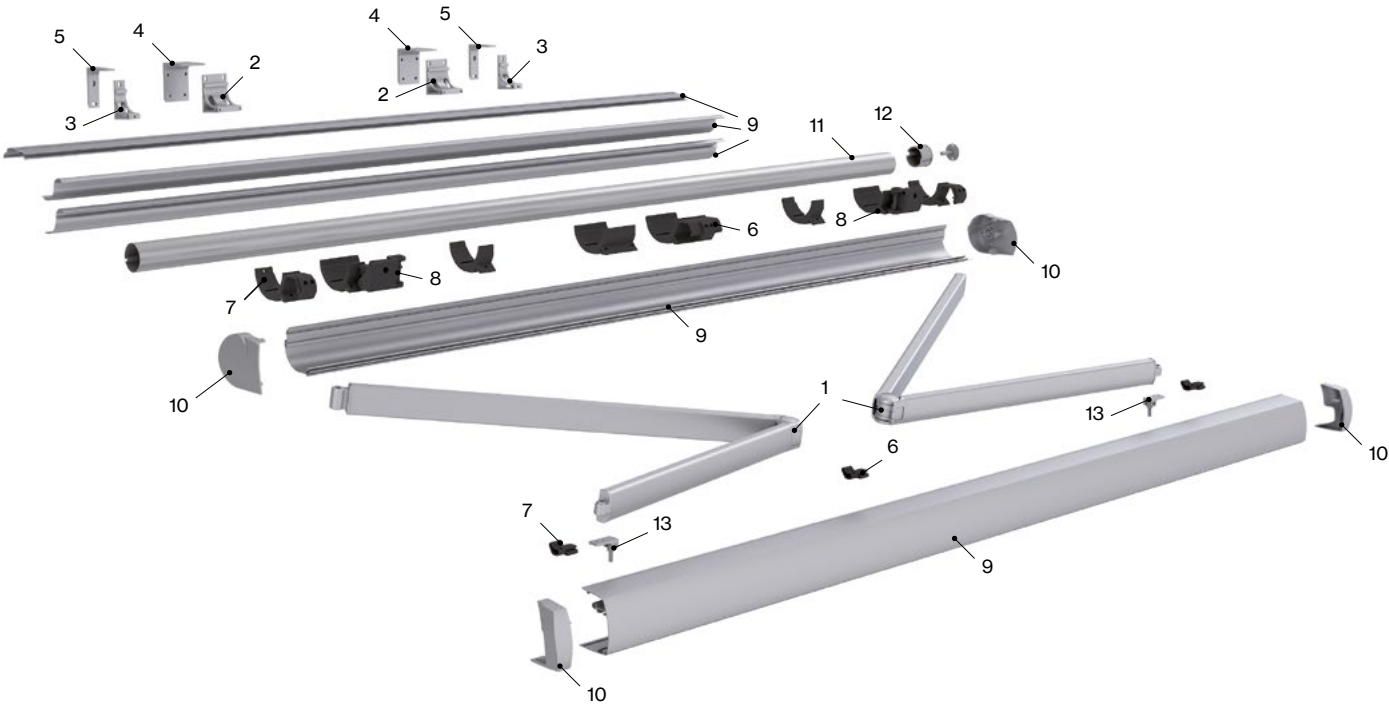
Measurements in mm.

Tests

Wind resistance: Class 2, according to the EN 13561:2004+A1:2008 standard.

Projection	Width								
	2 Arms							3 Arms	
	3,00	3,50	4,00	4,50	5,00	5,50	6,00	6,50	7,00
1,60	2	2	2	2	2	2	2	2	2
1,85	2	2	2	2	2	2	2	2	2
2,10	2	2	2	2	2	2	2	2	2
2,35	2	2	2	2	2	2	2	2	2
2,60	2	2	2	2	2	2	2	2	2
2,85		2	2	2	2	2	2	2	2
3,10			2	2	2	2	2	2	2
3,35			2	2	2	2	2	2	2
3,60				2	2	2	2	2	2

Class 2 ≈ 38 Km/h



Components

Nº Description	Nº Description
1 Set of chain arms	8 Kit bracket folding arm
2 Set of wall brackets 120 mm	9 Box profile kit
3 Set of wall brackets 50 mm	10 Set of bottom weight caps
4 Set of ceiling brackets 120 mm	11 Axle 80
5 Set of ceiling brackets 50 mm	12 Nylon round cap ø80 hole ø14
6 Kit conveyer box 120 mm	13 Set of adjustment arms
7 Kit conveyer box 50 mm	

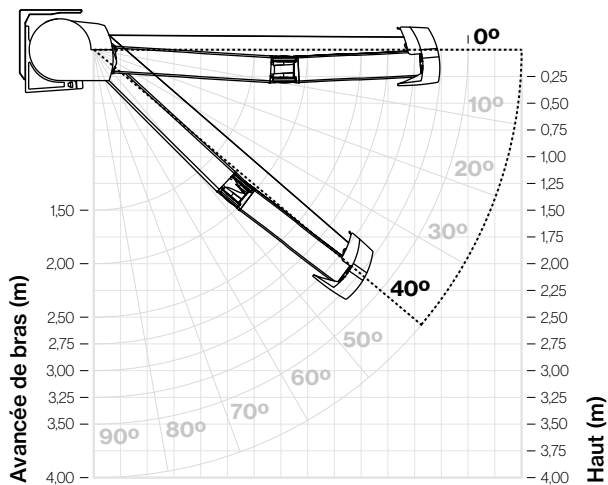


Description

Fourniture et installation du store à caisson modèle Palas de « Saxun » pour installation au mur ou au plafond, composé d'une toile extensible avec bras articulés et barre de charge, tous deux en aluminium extrudé, axe d'enroulement pivotant sur tube d'enroulement de 80 mm pour boîtier de motorisation qui pivote sur deux tulipes latérales en aluminium injecté. Le tout est logé dans un caisson en aluminium extrudé de 185 x 260 mm, avec une finition laquée en couleur RAL ou bois. Fonctionnement motorisé au moyen d'un moteur tubulaire et commande sans fil.

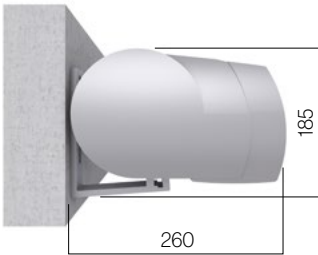
Degrés d'inclinaison

Selon le type d'installation	
Frontal	0° a 40°

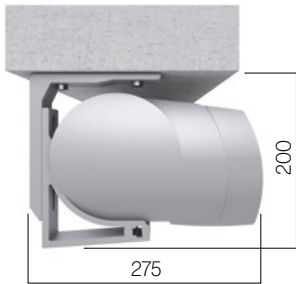


Types de fixation

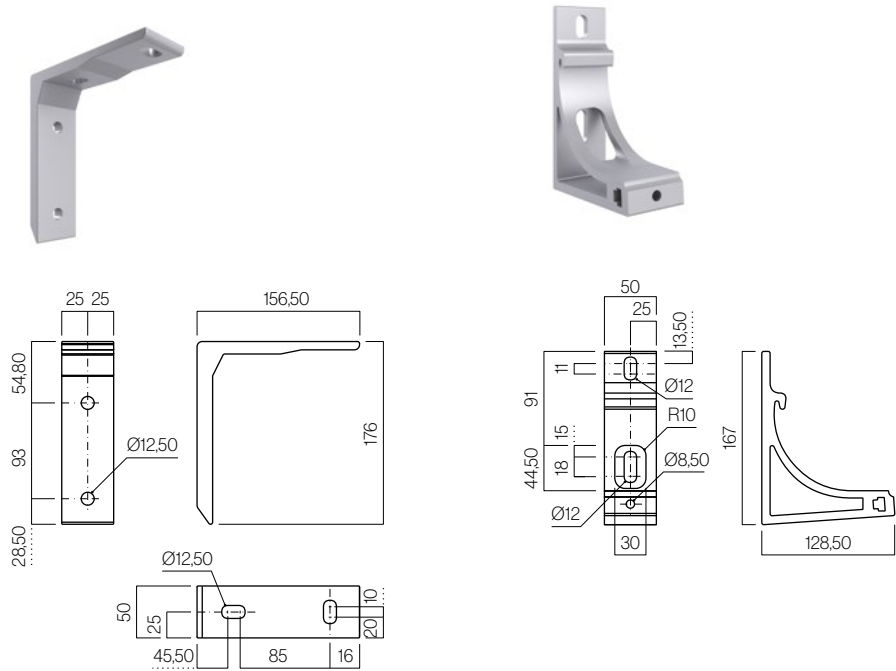
Frontal



Plafond



Supports



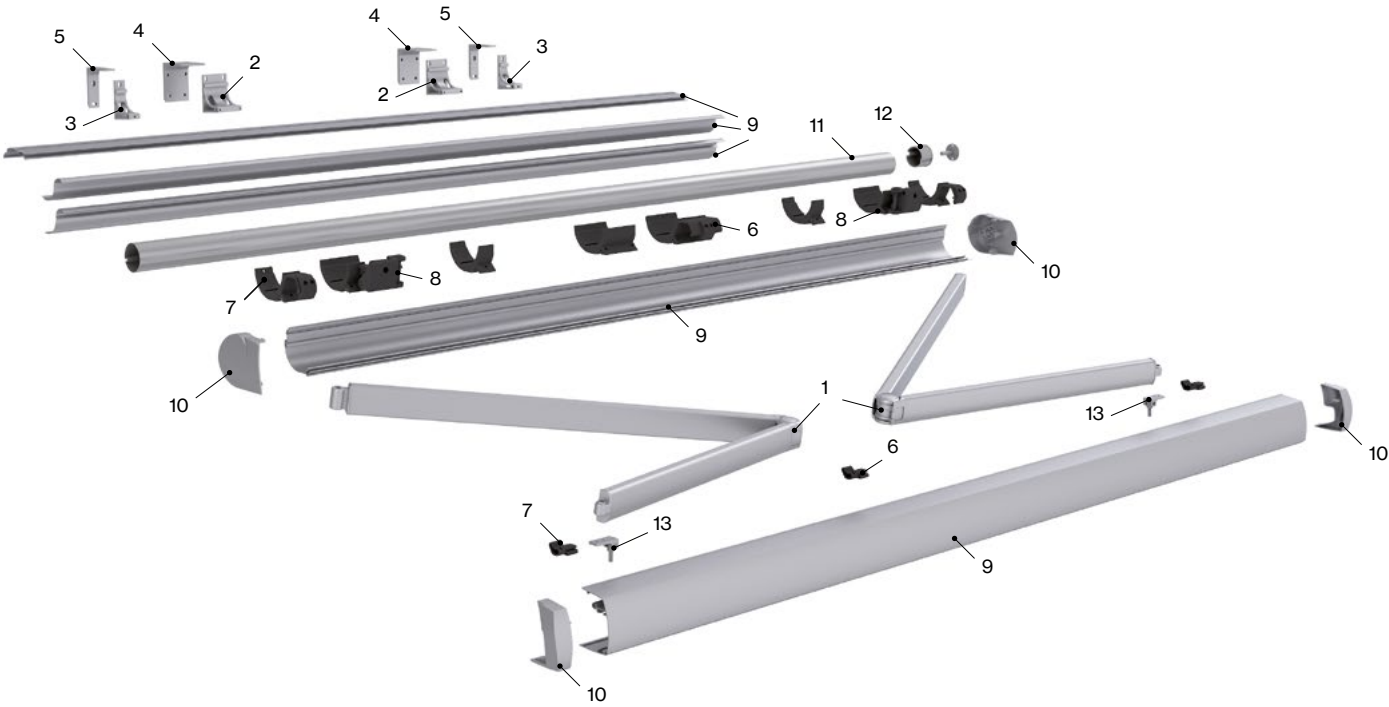
Mesures en mm.

Essais

Résistance au vent: Classe 2 selon la norme EN 13561:2004+A1:2008.

Extension	Largeur								
	2 Bras							3 Bras	
	3,00	3,50	4,00	4,50	5,00	5,50	6,00	6,50	7,00
1,60	2	2	2	2	2	2	2	2	2
1,85	2	2	2	2	2	2	2	2	2
2,10	2	2	2	2	2	2	2	2	2
2,35	2	2	2	2	2	2	2	2	2
2,60	2	2	2	2	2	2	2	2	2
2,85		2	2	2	2	2	2	2	2
3,10			2	2	2	2	2	2	2
3,35			2	2	2	2	2	2	2
3,60				2	2	2	2	2	2

Classe 2 ≈ 38 Km/h



Éléments

N° Description	N° Description
1 Paire de bras à chaîne	8 Kit de soutien bras repliable
2 Paire de supports mur 120 mm	9 Kit de profilés de caisson
3 Paire de supports mur 50 mm	10 Kit couvercles de caisson et terminal
4 Paire de supports pour plafond 120 mm	11 Tube d'enroulement 80
5 Paire de supports pour plafond 50 mm	12 Douille nylon ø80 creux ø14 et roulement
6 Kit de réglage pour caisson 120 mm	13 Joue baguettes bras
7 Kit de réglage pour caisson 50 mm	

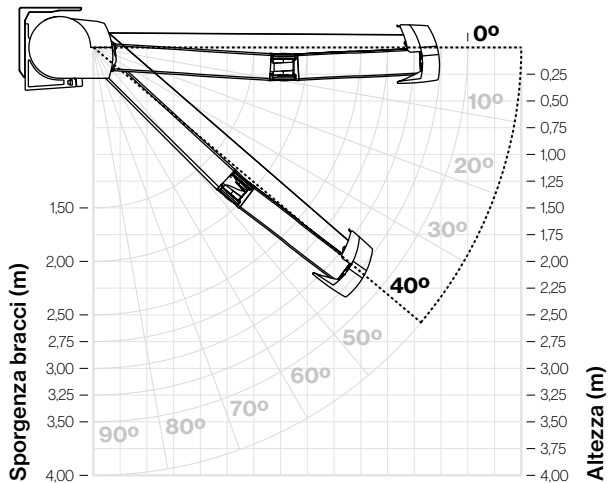


Descrizione

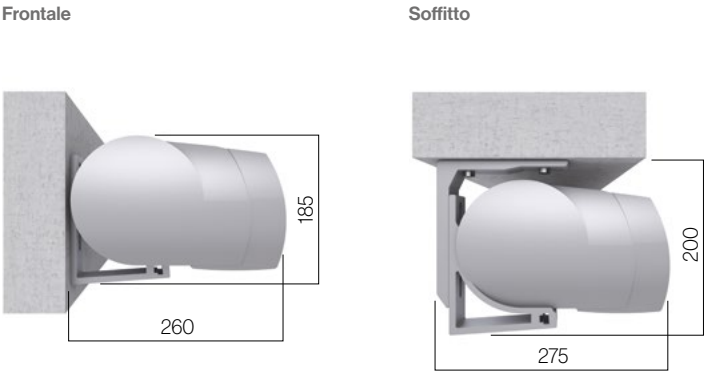
Fornitura e installazione della tenda da sole a cassonetto “Saxun” modello Palas per installazione a parete o a soffitto, costituita da un telo estensibile con bracci articolati e barra quadra, entrambi in alluminio estruso, albero girevole su rullo avvolgibile da 80 mm per alloggiamento motorizzazione che ruota su due testate laterali in alluminio pressofuso. Il tutto alloggiato in un cassonetto in alluminio estruso dalle dimensioni di 185 x 260 mm, con finitura laccata RAL o laccata legno. Azionamento motorizzato con motore tubolare e controllo wireless.

Gradi di inclinazione

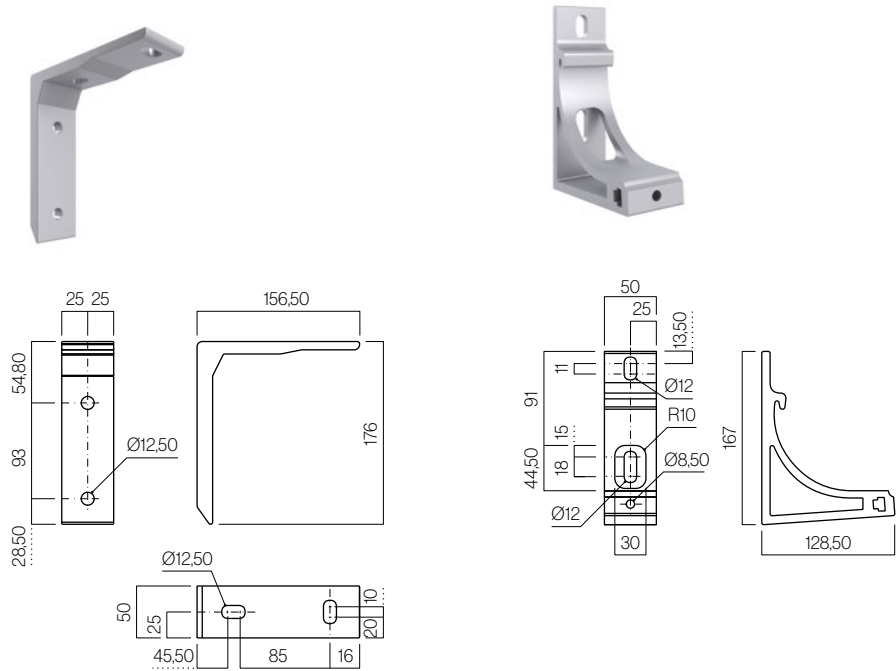
A seconda del tipo di impianto	
Frontale	0° a 40°



Tipi di fissaggio



Supporti



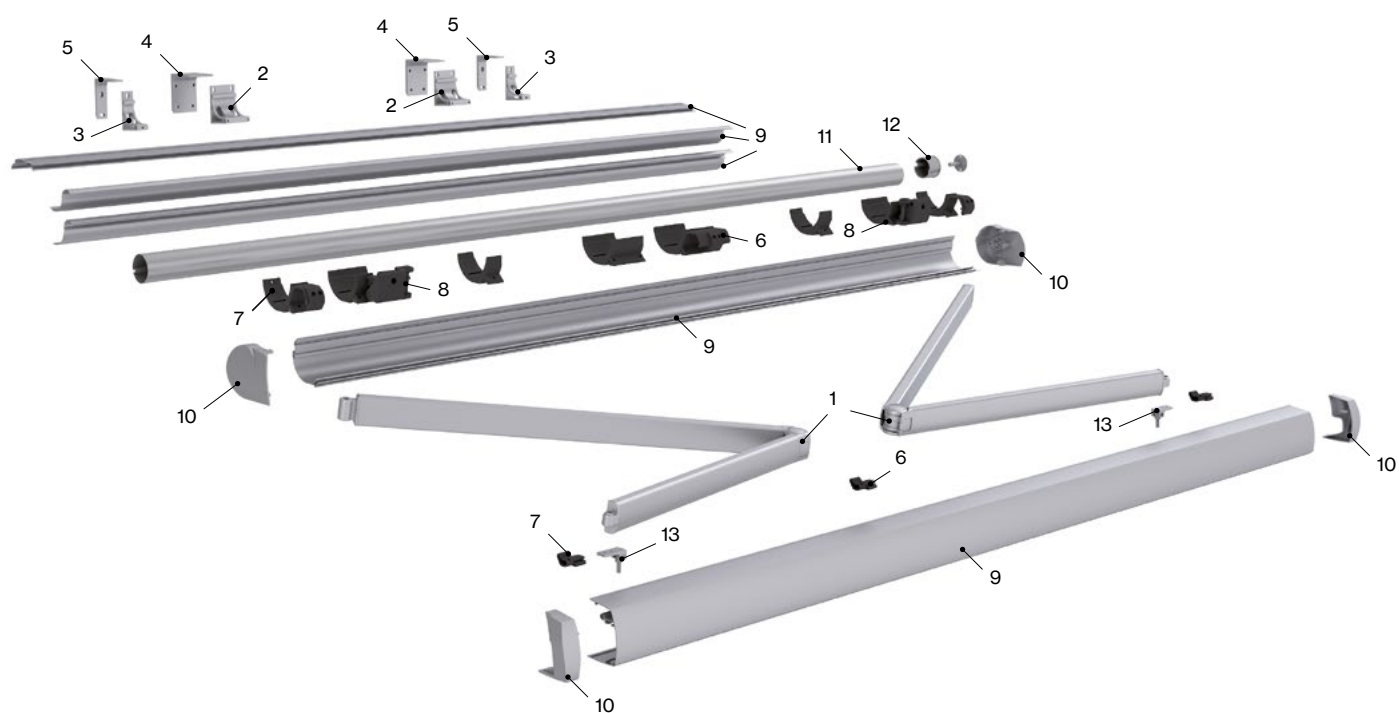
Misure in mm.

Testes

Resistenza al vento: Classe 2 secondo la norma EN 13659:2004+A1:2008.

Sporgenza bracci	Larghezza								
	2 braccia							3 braccia	
	3,00	3,50	4,00	4,50	5,00	5,50	6,00	6,50	7,00
1,60	2	2	2	2	2	2	2	2	2
1,85	2	2	2	2	2	2	2	2	2
2,10	2	2	2	2	2	2	2	2	2
2,35	2	2	2	2	2	2	2	2	2
2,60	2	2	2	2	2	2	2	2	2
2,85		2	2	2	2	2	2	2	2
3,10			2	2	2	2	2	2	2
3,35			2	2	2	2	2	2	2
3,60				2	2	2	2	2	2

Classi 2 ≈ 38 Km/h



Componenti

N° Descrizione	N° Descrizione
1 Coppia bracci con catena	8 Kit supporto bracci ribaltabile
2 Coppia supporti a muro 120 mm	9 Kit profilo cassonetto
3 Coppia supporti a muro 50 mm	10 Kit tappi cassoneto e terminale
4 Coppia supporti a soffitto 120 mm	11 Rullo di avvolgimento 80
5 Coppia supporti a soffitto 50 mm	12 Calotta nylon Ø80 cavo Ø14 e cuscinetto
6 Kit di regolazione per il cassonetto 120 mm	13 Coppia squadrette fissaggio bracci
7 Kit di regolazione per il cassonetto 50 mm	

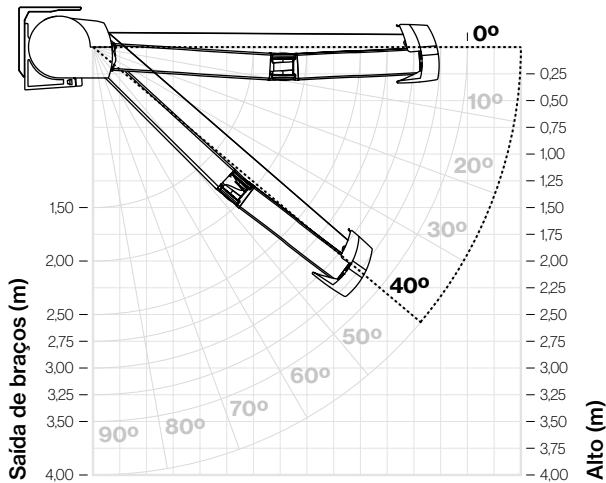


Descrição

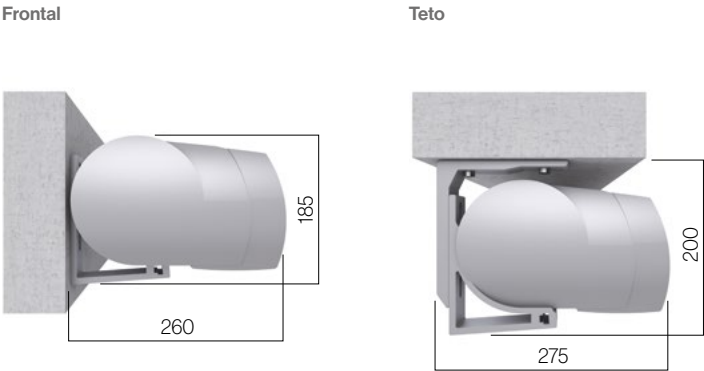
Fornecimento e instalação do toldo cassete modelo Palas da “Saxun” para instalação em parede ou teto, constituído por uma lona extensível através de braços articulados e barra de carga, ambos em alumínio extrudado, eixo de enrolamento pivotante em tubo de enrolamento de 80 mm para caixa de motorização que pivota em duas tampas laterais de alumínio injetado. Todos estes elementos alojados numa caixa de alumínio extrudado de 185 x 260 mm, com acabamento lacado RAL ou lacado madeira. Acionamento motorizado por motor tubular e controlo sem fios.

Graus de inclinação

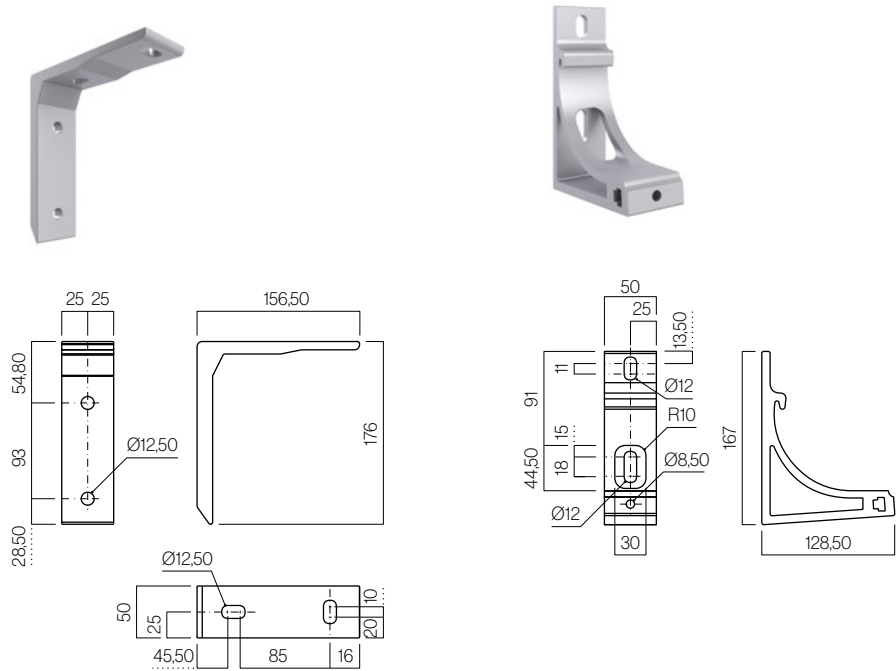
Consoante o tipo de instalação	
Frontal	0° a 40°



Tipos de fixação



Suportes



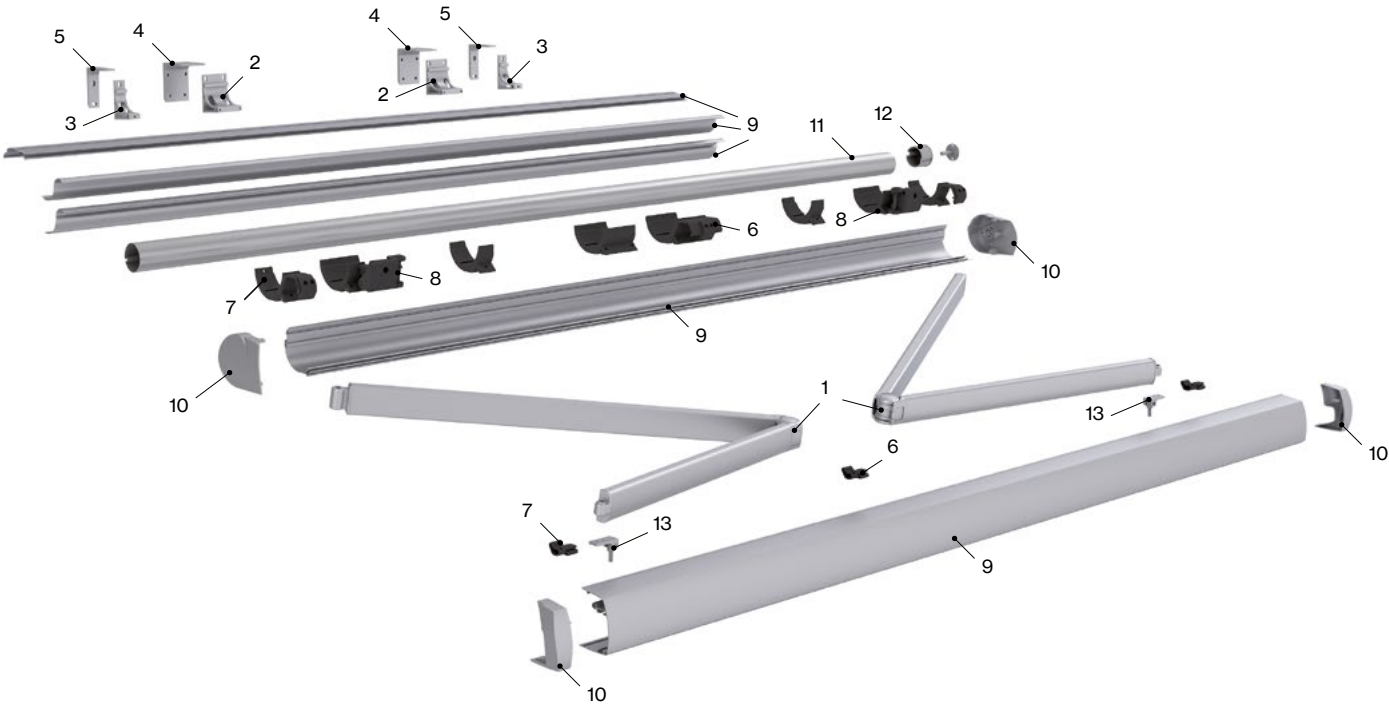
Medidas em mm.

Acabamentos

Resistência ao vento: Classe 2 em conformidade com a norma EN 13659:2004+A1:2008.

	Linha								
Saída	2 braços							3 braços	
	3,00	3,50	4,00	4,50	5,00	5,50	6,00	6,50	7,00
1,60	2	2	2	2	2	2	2	2	2
1,85	2	2	2	2	2	2	2	2	2
2,10	2	2	2	2	2	2	2	2	2
2,35	2	2	2	2	2	2	2	2	2
2,60	2	2	2	2	2	2	2	2	2
2,85		2	2	2	2	2	2	2	2
3,10			2	2	2	2	2	2	2
3,35			2	2	2	2	2	2	2
3,60				2	2	2	2	2	2

Classe 2 ≈ 38 Km/h



Componentes

Nº Descrição	Nº Descrição
1 Conj. Braços correia	8 Kit de suporte de braço retrátil
2 Conj. Suportes de parede 120 mm	9 Kit de perfis de cassete
3 Conj. Suportes de parede 50 mm	10 Kit de tampas cassete e terminal
4 Conj. Suportes de teto 120 mm	11 Tubo de enrolamento 80
5 Conj. Suportes de teto 50 mm	12 Bucha de nylon ø80 oco ø14 e rolamento
6 Kit de ajuste para cassete de 120 mm	13 Conj. trilhos braço
7 Kit de ajuste para cassete de 50 mm	



Giménez Ganga, S.L.U.
Polígono Industrial El Castillo
C/ Roma, 4 • 03630
Sax (Alicante) • España

saxun.com

FICHA PRESCRIPCIÓN PALAS · 01 · 0922