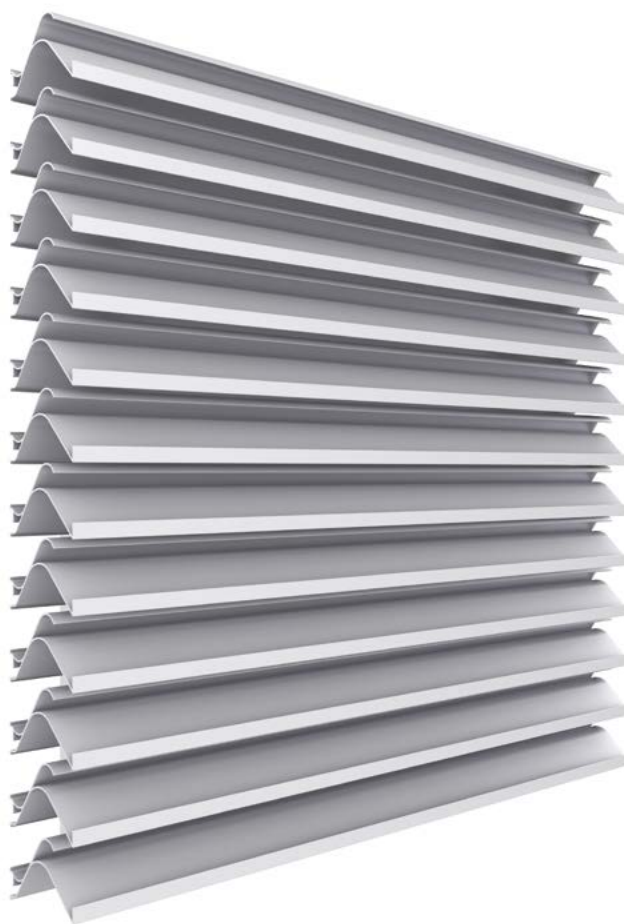





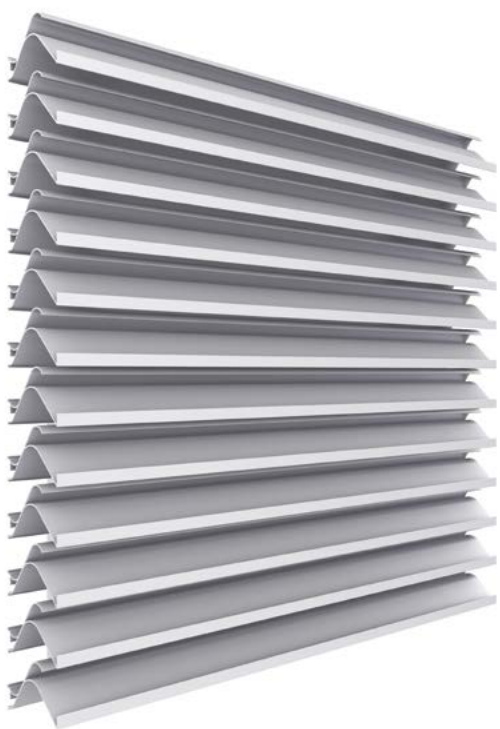


Celosía

HR Fija



- ESP 
- ENG 
- FRA 
- ITA 
- POR 



## Lama

# HR Fija

### Descripción

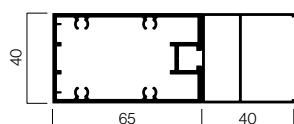
Suministro de sistema de celosía de lama fija modelo HR Saxun de dimensiones 45 x 68,81 mm, compuesta por lamas de aluminio extruido de aleación 6060 T5 modelo HR ancladas mediante clipado por presión sobre un perfil soporte doble de aluminio extruido de dimensiones 40x40 mm o 35x40 mm, con troquelado equidistante y paso de 11, 22 o 26 lamas/ml.

### Características técnicas

Lama diseñada para ventilación de espacios.

Posibilidad de instalación del soporte doble troquelado sobre una estructura auxiliar formada por perfilera portante Saxun modelos, perfil portante 100x40 mm y perfil portante 65x40 mm.

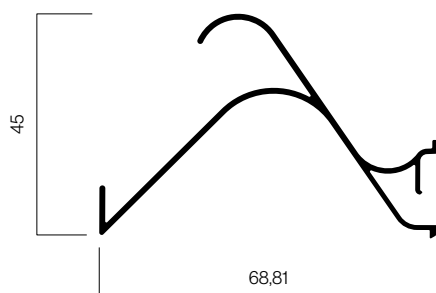
|   |          |
|---|----------|
| Separación máxima entre puntos de fijación de la lama | 1.200 mm |
| Vuelo máximo de la lama                               | 300 mm   |



Perfil portante 65 x 40 mm  
Soporte doble troquelado 40 x 40 mm



Perfil portante 100 x 40 mm  
Soporte doble troquelado 40 x 40 mm



Sección Lama HR Fija

### Superficie efectiva de ventilación

|                    |         |
|--------------------|---------|
| Paso 11 lamas / ml | 57,44 % |
| Paso 22 lamas / ml | 37,33 % |
| Paso 26 lamas / ml | 31,05 % |

### Aplicaciones

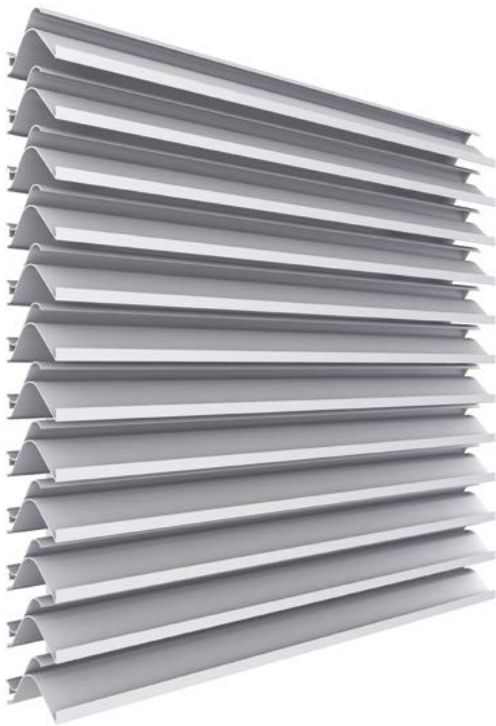
Uso residencial / industrial

### Acabados

Lacados carta RAL con la garantía del sello Qualideco.  
Anodizados con la garantía del sello Qualanod.

### Ensayos

CLASE 6 UNE-EN 13659



**Slat**

# HR Fixed

**Description**

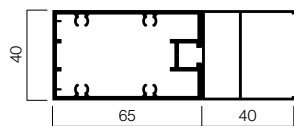
Supply of Saxun HR model fixed slatted louver system in dimensions of 45 x 68.81 mm, composed of extruded aluminium alloy 6060 T5 HR model slats anchored by pressure clipping on a double extruded aluminium support profile in dimensions of 40 x 40 mm or 35 x 40 mm, with equidistant die-cutting and selectable steps of 11, 22 or 26 slats/ml.

**Characteristics techniques**

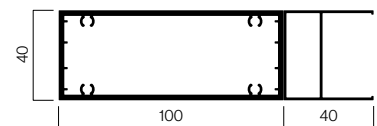
Slat designed specifically for ventilation of spaces.

Option of installing the double die-cut support profile on an auxiliary structure formed by Saxun support profiles, models support profile 100 x 40 mm and support profile 65 x 40 mm.

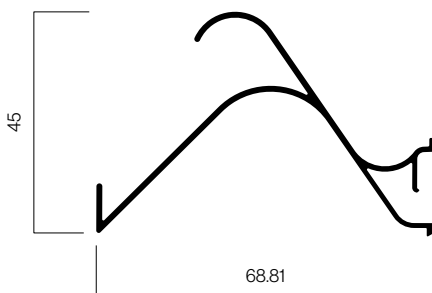
|  |          |
|--|----------|
| Separation between support profile centres | 1,200 mm |
| Slat overhang maximum                      | 300 mm   |



Supporting profile 65 x 40 mm  
Double die-cut support 40 x 40 mm



Supporting profile 100 x 40 mm  
Double die-cut support 40 x 40 mm



Fixed Slat HR section

**Effective ventilation area**

|                    |         |
|--------------------|---------|
| Step 11 slats / ml | 57.44 % |
| Step 22 slats / ml | 37.33 % |
| Step 26 slats / ml | 31.05 % |

**Applications**

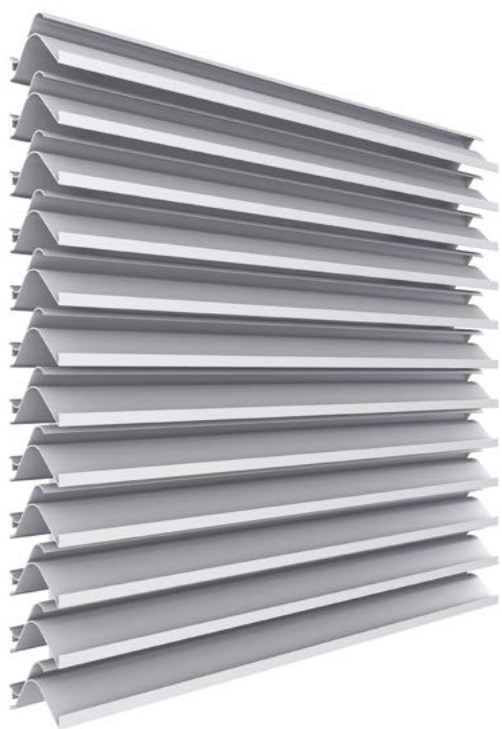
Residential / Industrial use

**Finishes**

Lacquered RAL letter with the guarantee of the Qualideco seal.  
Anodized with the guarantee of the Qualanod seal.

**Tests**

CLASS 6 UNE-EN 13659



## Lame

# HR Fixe

### Description

Fourniture d'un système de brise-soleil à lame fixe modèle HR Saxun de dimensions 45 x 68,81 mm, composé de lames en aluminium extrudé d'alliage 6060 T5 modèle HR ancrées par clipsage à pression sur un profilé à support double en aluminium extrudé de dimensions 40 x 40 mm ou 35 x 40 mm, avec découpe équidistante et pas de 22 ou 26 lames/ml.

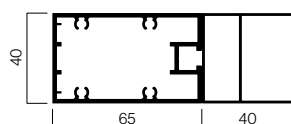
### Caractéristiques techniques

Lame conçue pour la ventilation d'espaces.

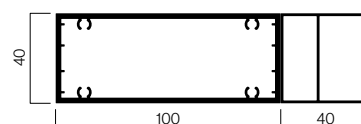
Possibilité d'installer le profilé de support doublement découpé sur une structure auxiliaire formée par les modèles de profilés porteur Saxun, profilé porteur 100 x 40 mm, et profilé porteur 65 x 40 mm.

|   |          |
|---|----------|
| Séparation maximale entre les points de fixation de la lame | 1.200 mm |
|---|----------|

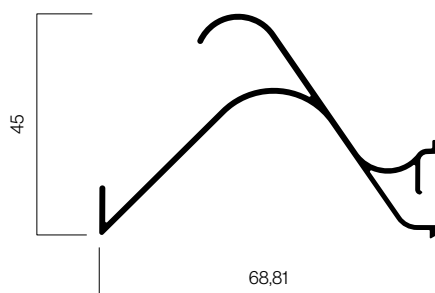
|                             |        |
|-----------------------------|--------|
| Surface maximale de la lame | 300 mm |
|-----------------------------|--------|



Profil porteur 65x40 mm  
Support double auto-fileté 40 x 40 mm



Profil porteur 100x40 mm  
Support double auto-fileté 40 x 40 mm



Section Lame HR Fixe

### Zone de ventilation efficace

|                     |         |
|---------------------|---------|
| Étape 11 lames / ml | 57,44 % |
| Étape 22 lames / ml | 37,33 % |
| Étape 26 lames / ml | 31,05 % |

### Applications

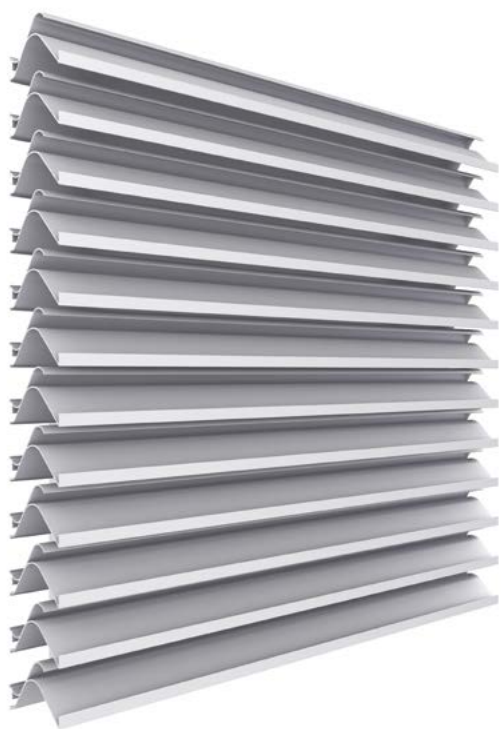
Utilisation résidentielle / Industriel

### Finitions

Lettre RAL laquée avec la garantie du sceau Qualideco.  
Anodisé avec la garantie du sceau Qualanod.

### Essais

CLASS 6 UNE-EN 13659



## Lama

# HR Fissa

### Descrizione

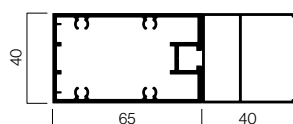
Fornitura di un sistema frangisole a lame fisse modello HR Saxun di dimensioni 45 x 68,81 mm, costituito da lame in alluminio estruso in lega 6060 T5 modello HR, ancorate a pressione su un profilo di supporto doppio in alluminio estruso di dimensioni 40 x 40 mm o 35 x 40 mm, con fustellatura equidistante e passo da 11, 22 o 26 lame/ml.

### Caratteristiche tecniche

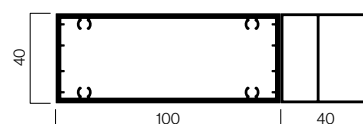
Lame progettate per la ventilazione di spazi.

Possibilità di installare il profilo del supporto doppio fustellato su una struttura ausiliare formata da un profilo portante Saxun modelli, profilo portante 100x40, e profilo portante 65x40 mm.

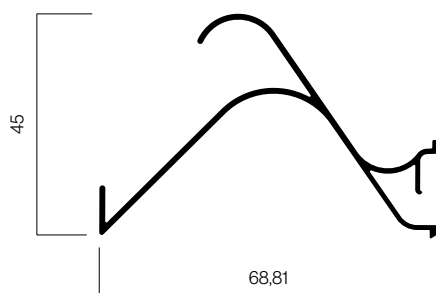
|   |          |
|---|----------|
| Massima separazione tra i punti di fissaggio della lama | 1.200 mm |
| Aggetto massimo lama                                    | 300 mm   |



Profilo di supporto 65 x 40 mm  
Supporto doppio taglio 40 x 40 mm



Profilo di supporto 100 x 40 mm  
Supporto doppio taglio 40 x 40 mm



Sezione Lama HR Fissa

### Area di ventilazione efficace

|                   |         |
|-------------------|---------|
| Fase 11 lame / ml | 57,44 % |
| Fase 22 lame / ml | 37,33 % |
| Fase 26 lame / ml | 31,05 % |

### Applicazioni

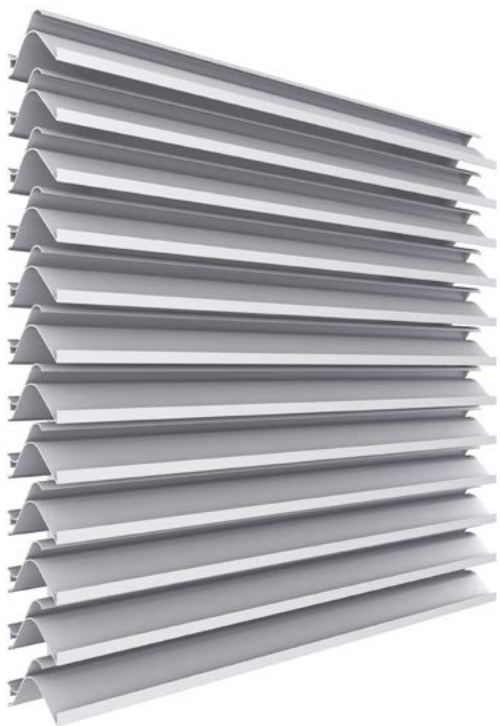
Uso residenziale / Industriale

### Finiture

Lettera laccata RAL con garanzia del sigillo Qualideco.  
Anodizzato con la garanzia del sigillo Qualanod.

### Prove

CLASSE 6 UNE-EN 13659



## Lâmina

# HR Fixa

### Descrição

Fornecimento de sistema de persianas de lâminas fixas modelo HR Saxun com dimensões de 45 x 68,81 mm, composto por lâminas de alumínio extrudido de liga 6060 T5 modelo HR, ancoradas por prensagem sobre um perfil de suporte duplo de alumínio extrudido com dimensões de 40x40 mm ou 35x40 mm, com perfuração equidistante e passagem de 11, 22 ou 26 lâminas/ml.

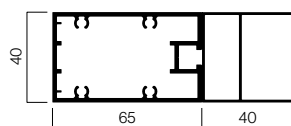
### Características técnicas

Lâmina desenhada para ventilação de espaços.

Possibilidade de instalação do perfil de suporte duplo perfurado sobre uma estrutura auxiliar formada por perfilaria forte Saxun modelos, perfil portante 100x40 mm, e perfil portante 65x40 mm.

Separação máxima entre os pontos de fixação das lâminas 1.200 mm

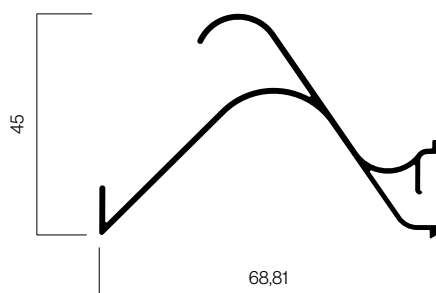
Saliência lâmina máximo 300 mm



Perfil portante 65 x 40 mm  
Soporte doble troquelado 40 x 40 mm



Perfil portante 100 x 40 mm  
Soporte doble troquelado 40 x 40 mm



Seção Lâmina HR Fixa

### Área de ventilação efetiva

|                       |         |
|-----------------------|---------|
| Etapa 11 lâminas / ml | 57,44 % |
| Etapa 22 lâminas / ml | 37,33 % |
| Etapa 26 lâminas / ml | 31,05 % |

### Aplicações

Uso residencial / industrial

### Acabamentos

Lacados carta RAL com a garantia do selo Qualideco.  
Anodizados com a garantia do selo Qualanod.

### Testes

CLASSE 6 UNE-EN 13659

**saxun**  
by Giménez Ganga

**Giménez Ganga, S.L.U.**  
Polígono Industrial El Castillo  
C/ Roma, 4 • 03630  
Sax (Alicante) • España

**saxun.com**

FICHA PRESCRIPCIÓN CELOSIA HR FUA - 03 - 0724

