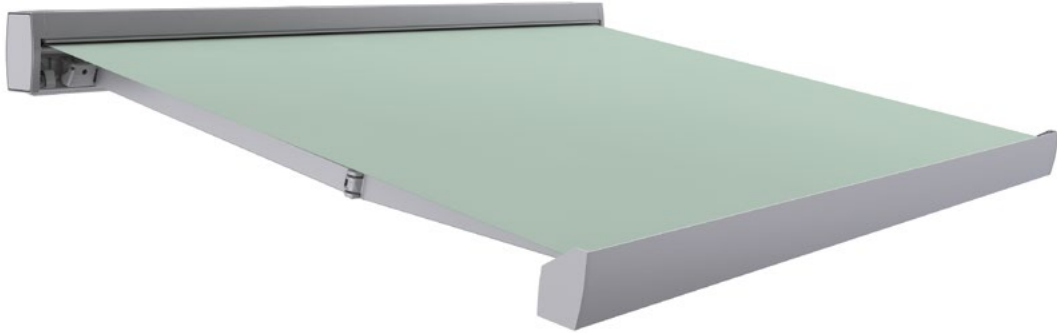


Ficha técnica



Ameris

Características técnicas

024518 Ameris



Accionamiento

-  Motorizado
-  Automatizado

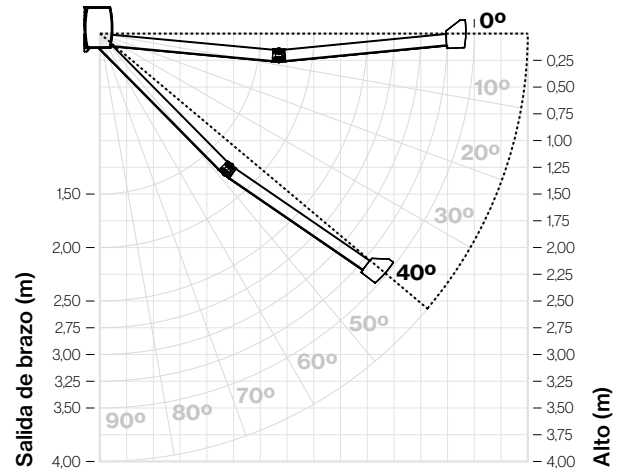
Instalación

-  Ventana
-  Balcón
-  Terraza
-  Forjado

Grados de inclinación

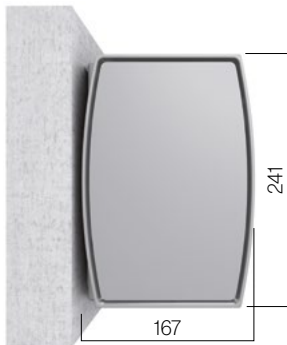
Según el tipo de instalación

Frontal **0° a 40°**



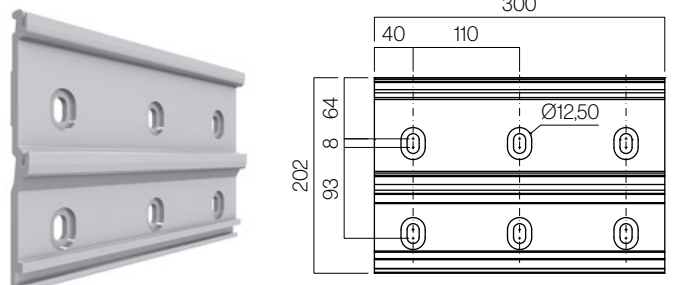
Tipos de sujeción

Frontal



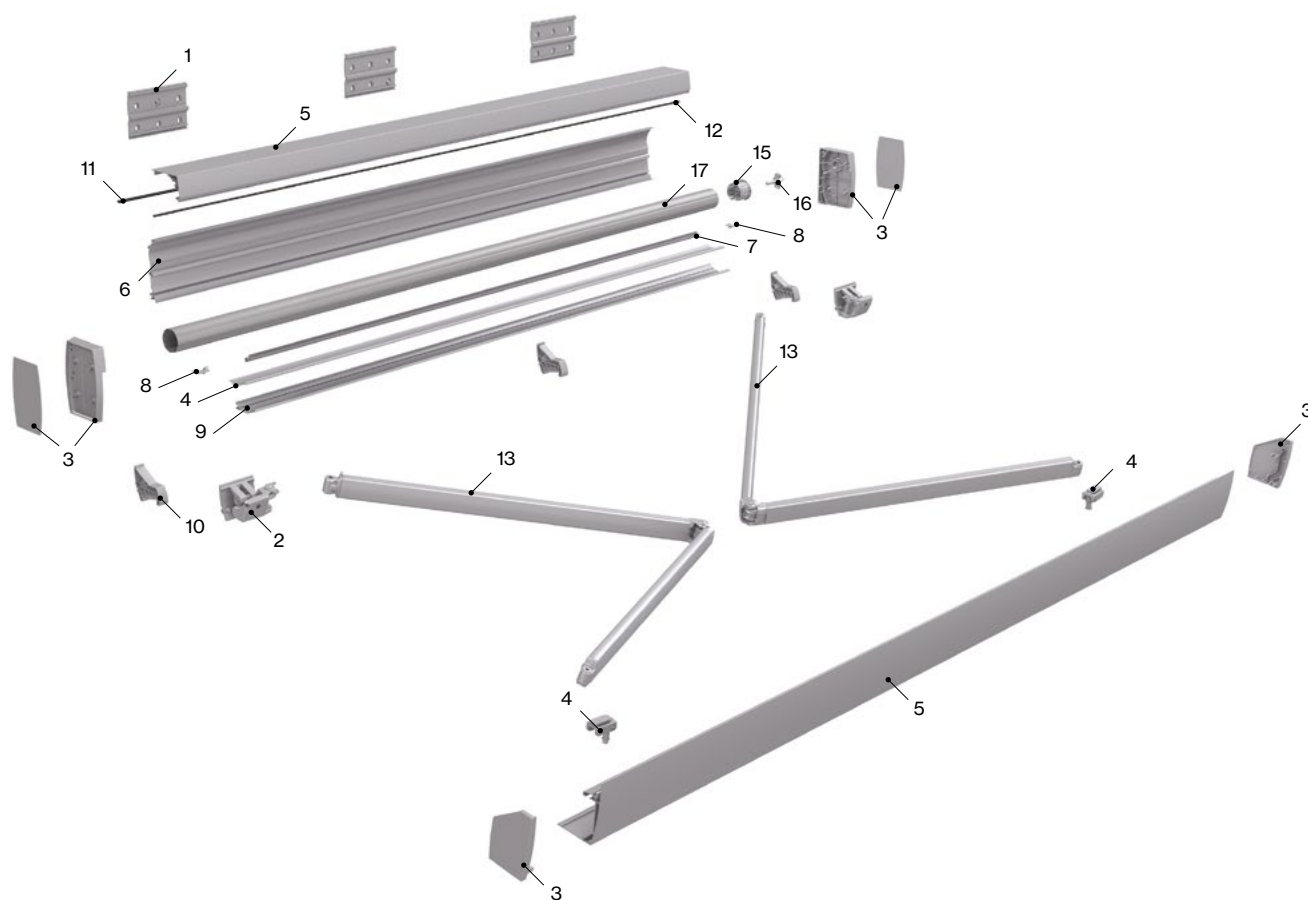
Soportes

Pared



Medidas en mm.

Características técnicas



Componentes

Nº	Cód.	Descripción	Nº	Cód.	Descripción
1	024520	Soporte pared aluminio Ameris	10	024153	Embudo Ameris
2	024157	Soporte brazo abatible Ameris	11	024529	Goma superior Ameris
3	024521	Jgo. tapones para terminal y cofre Ameris	12	022223	Goma inferior Ameris
4	024522	Jgo. deslizadores brazos Ameris	13	022990	Jgo. de brazos
5	024524	Kit perfiles anterior 4M Ameris	14	024162	Perfil salva tejidos en PVC Ameris
6	024523	Kit perfiles posterior 4M Ameris	15	022576	Casquillo nylon ø80 hueco ø14 y cojinete
7	024526	Tejadillo inferior LED Ameris	16	030569	Perno soporte contera eje 78
8	024527	Tapones para tejadillo LED Ameris	17	022807	Tubo de enrollé ø80
9	024525	Tejadillo inferior			

Resistencia al viento según EN 13561:2004+A1:2008

Salida	Línea														
	2,50	2,75	3,00	3,25	3,50	3,75	4,00	4,25	4,50	4,75	5,00	5,25	5,50	5,75	6,00
1,85	1	1	1	1	1	1	1	1	1	1	1	1	1	1	1
2,10		1	1	1	1	1	1	1	1	1	1	1	1	1	1
2,60				1	1	1	1	1	1	1	1	1	1	1	1
3,10						1	1	1	1	1	1	1	1	1	1
3,35							1	1	1	1	1	1	1	1	1
3,60								1	1	1	1	1	1	1	1
4,10										1	1	1	1	1	1

Clase 1 ≈ 28 Km/h

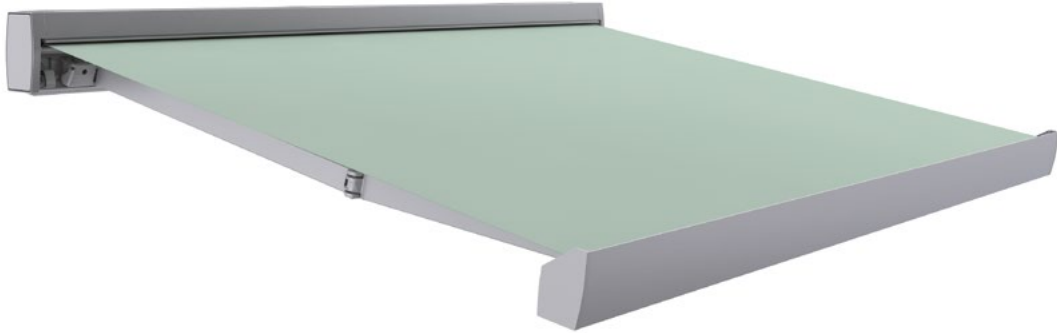
Tu mundo,
nuestro universo.

— Datasheet



Ameris

Technical characteristics





024518 Ameris



Mobilisation

-  Motorized
-  Automated

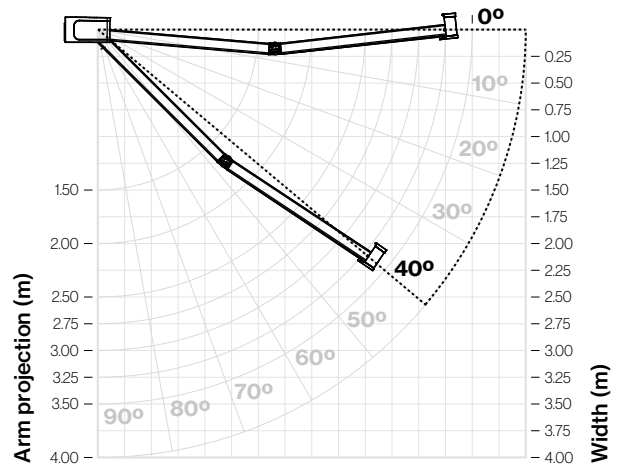
Installation possibilities

-  Window
-  Balcony
-  Terrace
-  Wrought

Degrees of inclination

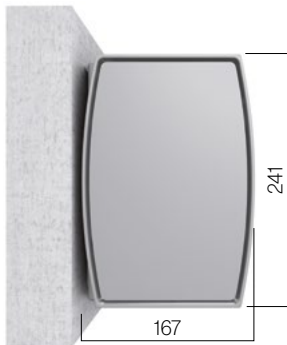
Depending on the type of installation

Front installation **0° to 40°**



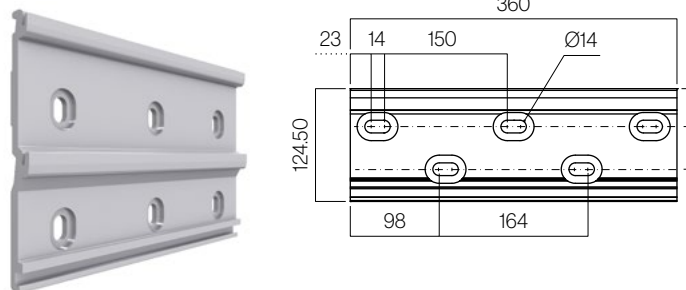
Types of fixing

Frontal



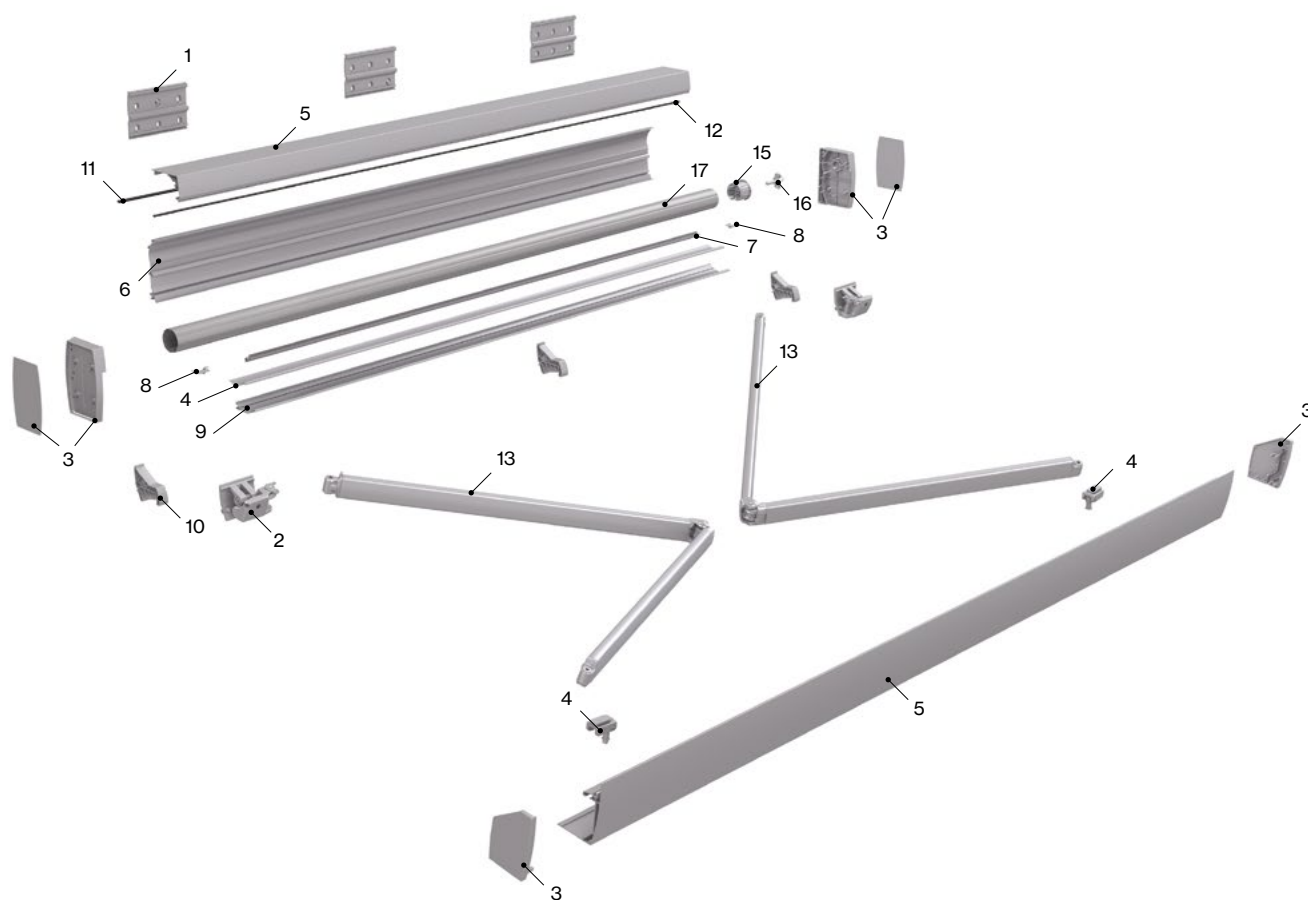
Supports

Wall



Measurements in mm.

Technical characteristics



Components

Nº	Code	Description	Nº	Code	Description
1	024520	Wall extruded bracket Ameris	10	024153	Conveyor Ameris
2	024157	Arm supports with tipping system	11	024529	Upper rubber Ameris
3	024521	Box and front bar end covers Ameris	12	022223	Lower rubber Ameris
4	024522	Set of sloping runners for arms Ameris	13	022990	Set of arms
5	024524	Front side profiles kit 4M Ameris	14	024162	PVC fabric-saving profile Ameris
6	024523	Backside profiles kit 4M Ameris	15	022576	Nylon bushing ø80 hollow ø14 and bearing
7	024526	LED downside cover Ameris	16	030569	Pin Support Axle 78
8	024527	Covers for LED downside cover Ameris	17	022807	Coil tube ø80
9	024525	Backside profiles set			

Wind resistance EN 13561:2004+A1:2008

Projection	Width															
	2,50	2,75	3,00	3,25	3,50	3,75	4,00	4,25	4,50	4,75	5,00	5,25	5,50	5,75	6,00	
1,85	1	1	1	1	1	1	1	1	1	1	1	1	1	1	1	
2,10		1	1	1	1	1	1	1	1	1	1	1	1	1	1	
2,60				1	1	1	1	1	1	1	1	1	1	1	1	
3,10						1	1	1	1	1	1	1	1	1	1	
3,35							1	1	1	1	1	1	1	1	1	
3,60								1	1	1	1	1	1	1	1	
4,10										1	1	1	1	1	1	

Class 1 ≈ 28 Km/h

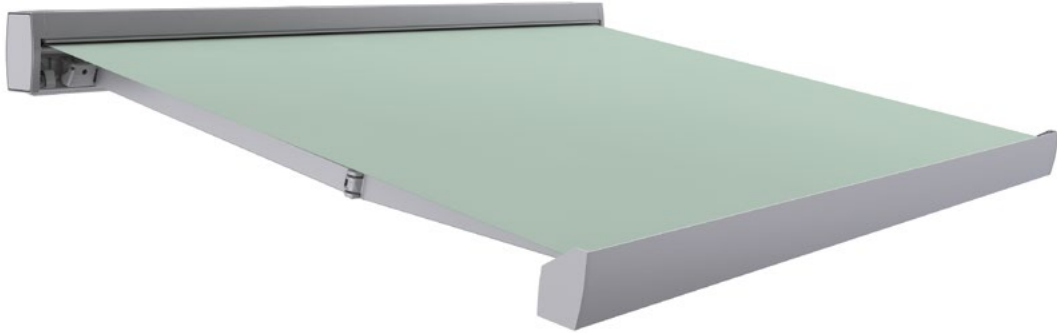
Your world,
our universe.

— Fiche technique

Ameris

Caractéristiques techniques

024518 Ameris



Type de manoeuvre



Motorisé



Automatisé

Installation



Fenêtre



Balcon



Terrasse



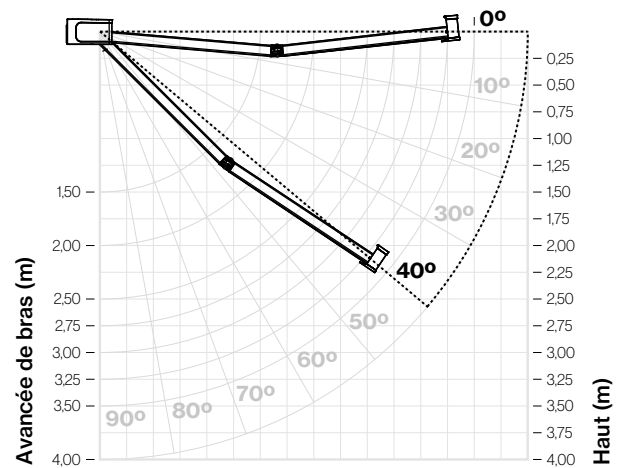
Forgé

Degrés d'inclinaison

Selon le type d'installation

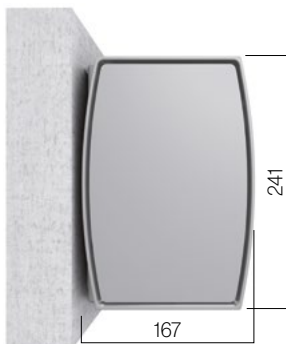
Frontal

0° à 40°



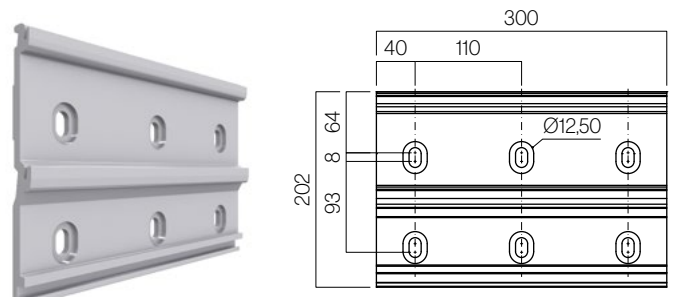
Types de fixation

Frontal



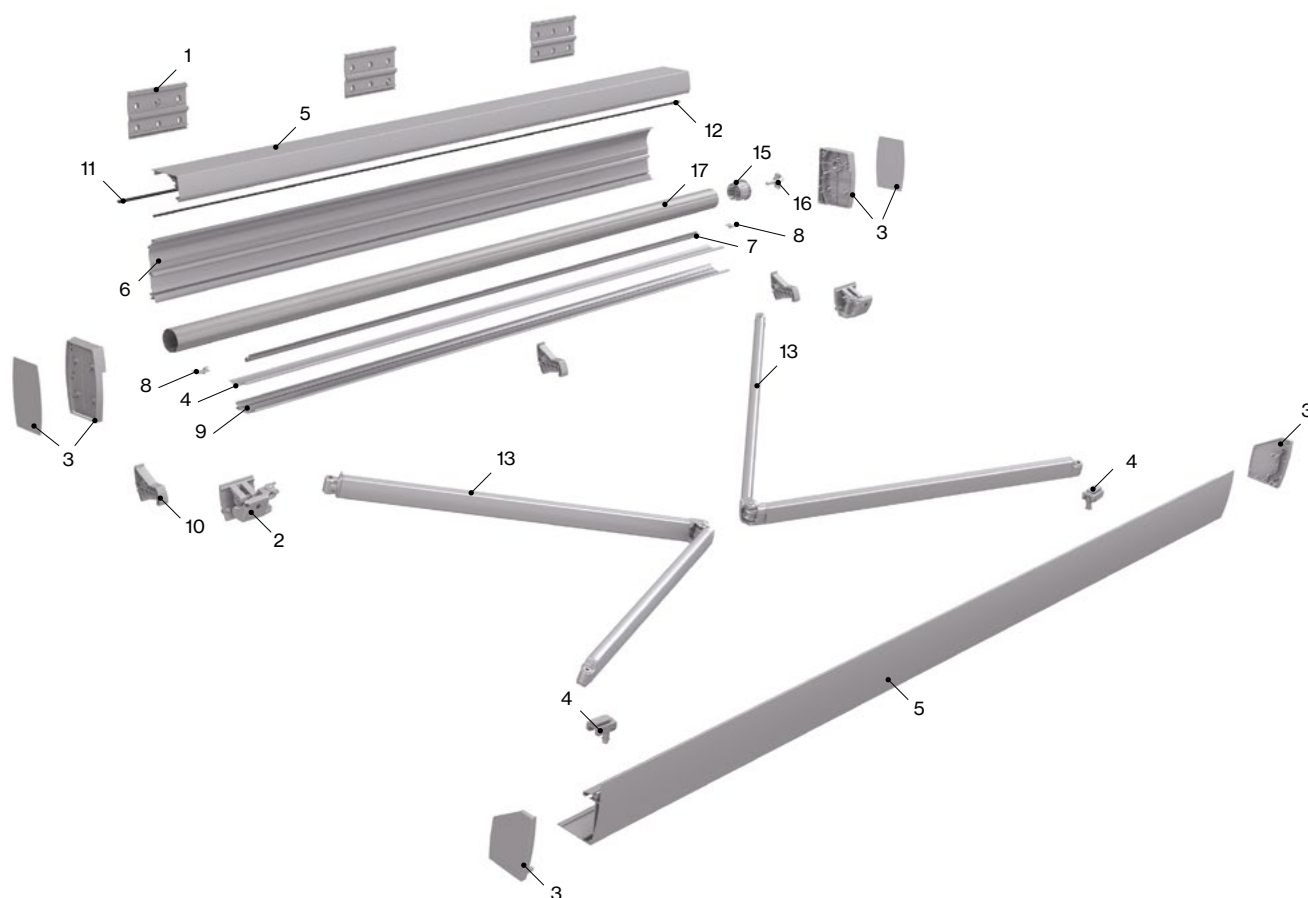
Supports

Mur



Mesures en mm.

Caractéristiques techniques



Éléments

N°	Réf.	Description	N°	Réf.	Description
1	024520	Support mur aluminium Ameris	10	024153	Tulipes Ameris
2	024157	Support bras pliage Ameris	11	024529	Gomme supérieur Ameris
3	024521	Paire embouts pour lame finale et caisson Ameris	12	022223	Gomme inférieur Ameris
4	024522	Paire d'accrochage pour bras Ameris	13	022990	Paire de bras
5	024524	Kit profils intérieur 4M Ameris	14	024162	Profil protecteur du tissu en PVC Ameris
6	024523	Kit profils extérieur 4M Ameris	15	022576	Douille nylon ø80 creux ø14 et roulement
7	024526	Toiture inférieur LED Ameris	16	030569	Broche de support de embout axe 78
8	024527	Embouts pour toiture LED Ameris	17	022807	Tube d'enrobage ø80
9	024525	Toiture inférieur			

Classement résistance au vent EN 13561:2004+a1:2008

Avancée bras	Largeur															
	2,50	2,75	3,00	3,25	3,50	3,75	4,00	4,25	4,50	4,75	5,00	5,25	5,50	5,75	6,00	
1,85	1	1	1	1	1	1	1	1	1	1	1	1	1	1	1	
2,10		1	1	1	1	1	1	1	1	1	1	1	1	1	1	
2,60				1	1	1	1	1	1	1	1	1	1	1	1	
3,10						1	1	1	1	1	1	1	1	1	1	
3,35							1	1	1	1	1	1	1	1	1	
3,60								1	1	1	1	1	1	1	1	
4,10										1	1	1	1	1	1	

Classe 1 ≈ 28 Km/h

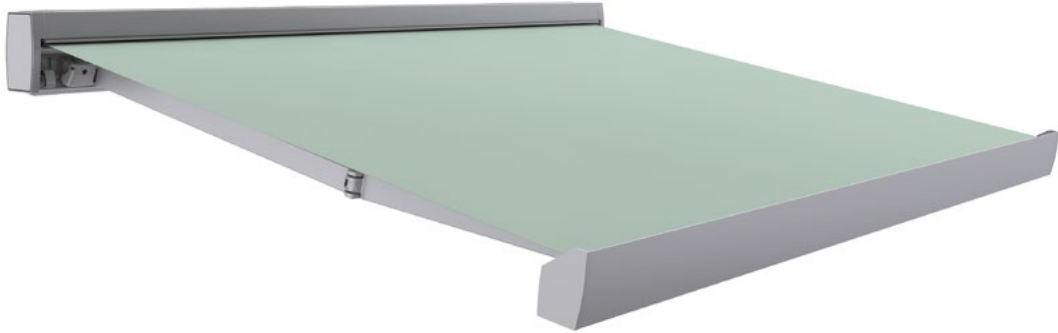
Votre monde,
notre univers.

— Scheda tecniche

Ameris

Caratteristiche tecniche

024518 Ameris



Azionamento



Motorizzato



Automatizzato

Installazione



Finestra



Balcone



Terrazzo



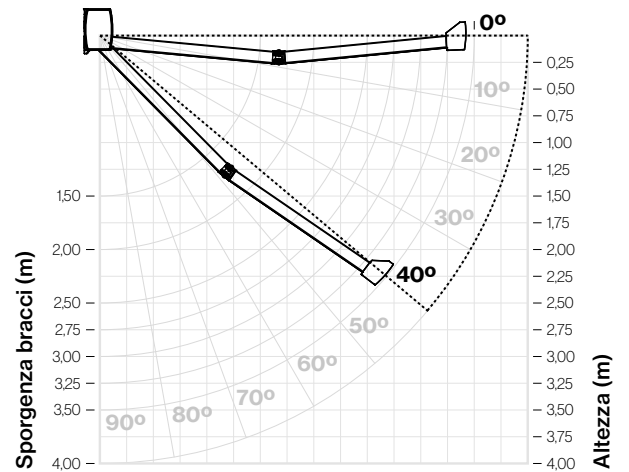
Forjado

Gradi di inclinazione

A seconda del tipo di impianto

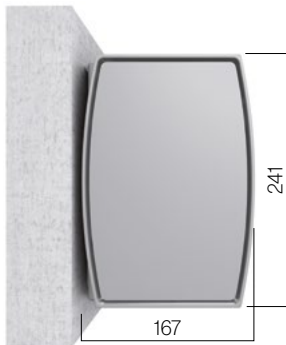
Frontale

0° a 40°



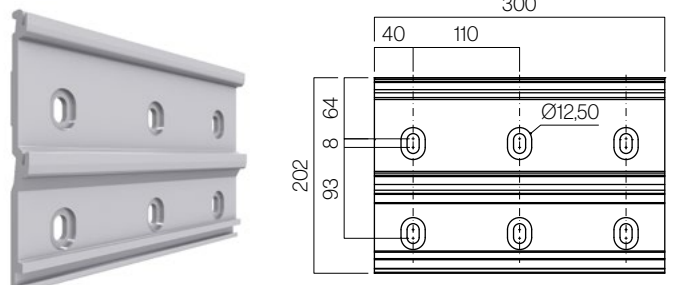
Tipi di fissaggio

Frontale



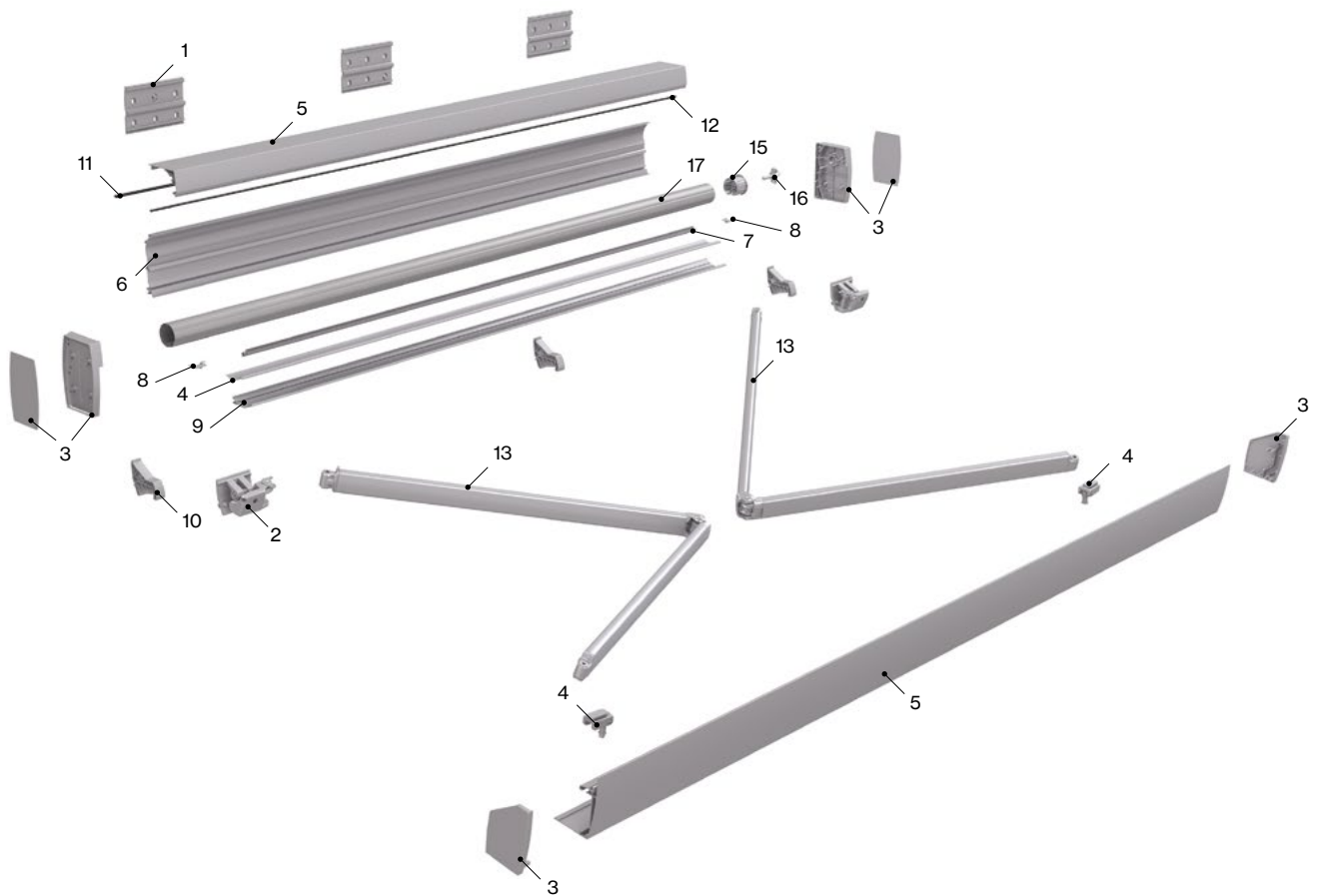
Supporti

Muro



Misure in mm.

Caratteristiche tecniche



Componenti

N°	Codice	Descrizione	N°	Codice	Descrizione
1	024520	Supporto parette in alluminio Ameris	10	024153	Convogliatore Ameris
2	024157	Supporto bracci ribaltabile Ameris	11	024529	Guarnizione superiore Ameris
3	024521	Coppia tappi per terminale e cassetto Ameris	12	022223	Guarnizione inferiore Ameris
4	024522	Coppia scivoli inclinati per bacci Ameris	13	022990	Coppia bracci
5	024524	Kit profili anteriore 4M Ameris	14	024162	Profilo salvatessuto in PVC Ameris
6	024523	Kit profili posteriore 4M Ameris	15	022576	Attacco in nylon ø80 vuoto ø14 e cuscinetto
7	024526	Tetto inferiore LED Ameris	16	030569	Perno di supporto albero 78
8	024527	Tappi per tetto LED Ameris	17	022807	Tubo di avvolgimento ø80
9	024525	Tetto inferiore			

Resistenza al vento EN 13561:2004+A1:2008

Sporgenza bracci	Larghezza															
	2,50	2,75	3,00	3,25	3,50	3,75	4,00	4,25	4,50	4,75	5,00	5,25	5,50	5,75	6,00	
1,85	1	1	1	1	1	1	1	1	1	1	1	1	1	1	1	
2,10		1	1	1	1	1	1	1	1	1	1	1	1	1	1	
2,60				1	1	1	1	1	1	1	1	1	1	1	1	
3,10						1	1	1	1	1	1	1	1	1	1	
3,35							1	1	1	1	1	1	1	1	1	
3,60								1	1	1	1	1	1	1	1	
4,10										1	1	1	1	1	1	

Clase 1 ≈ 28 Km/h

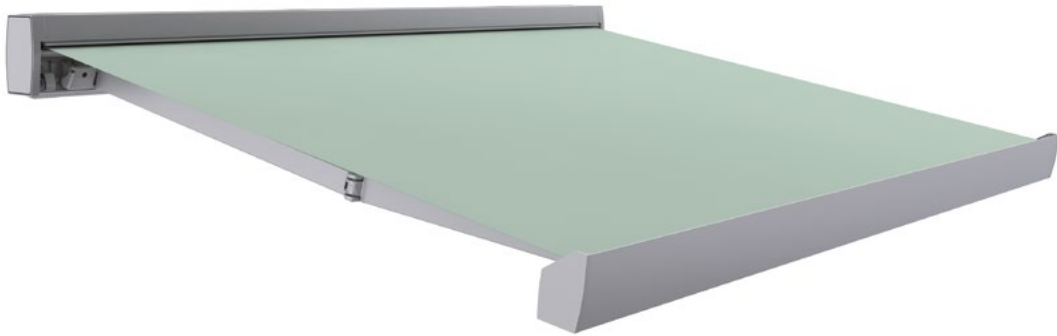
Il tuo mondo,
il nostro universo.

— Folha técnica

Ameris

Características técnicas

024518 Ameris



Accionamento



Motorizado



Automatizado

Instalação



Janela



Varanda



Terraço



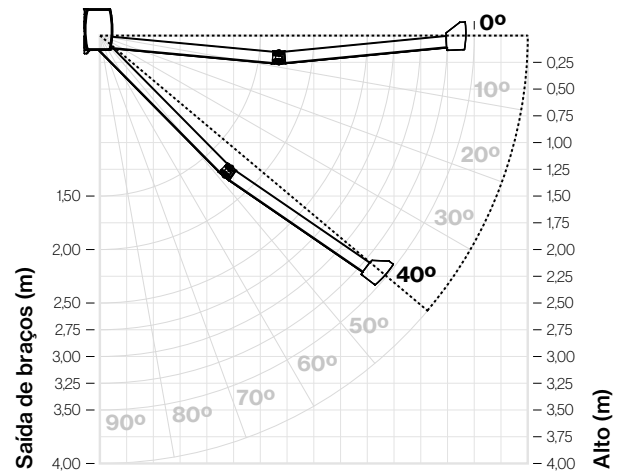
Forjado

Graus de inclinação

Consoante o tipo de instalação

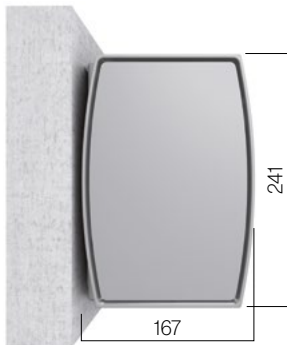
Frontal

0° a 40°



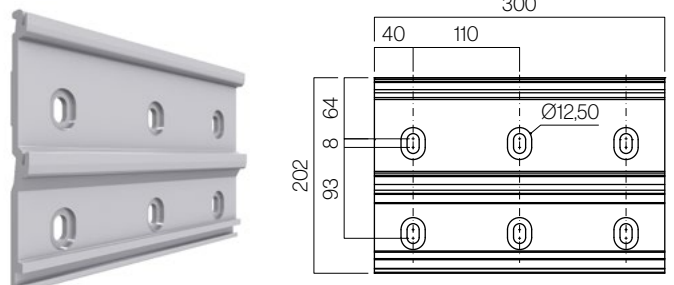
Tipos de fixação

Frontal



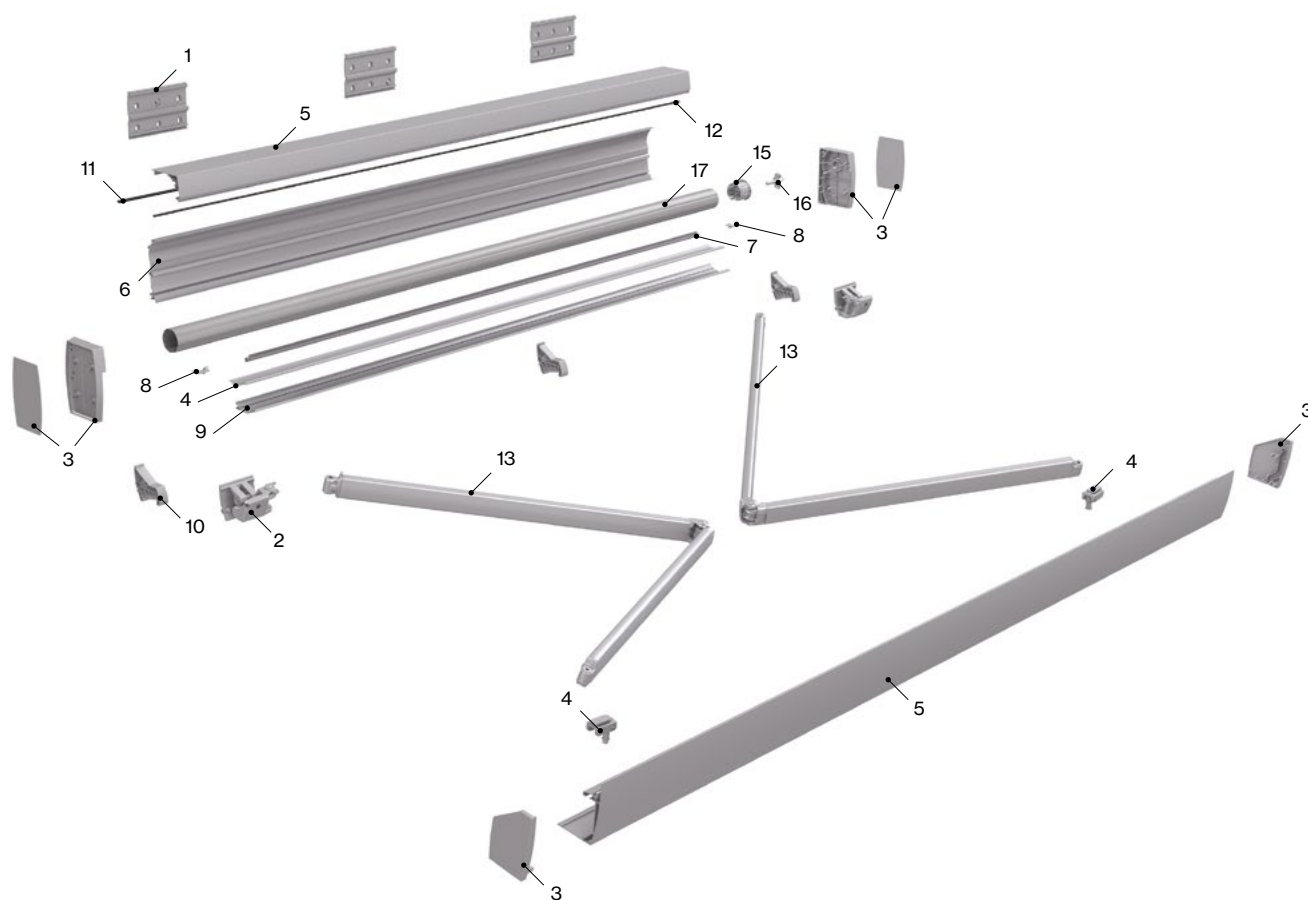
Suportes

Parede



Medidas em mm.

Características técnicas



Componentes

Nº	Cód.	Descrição	Nº	Cód.	Descrição
1	024520	Suporte de parede em alumínio Ameris	10	024153	Funil Ameris
2	024157	Suporte de braço rebatível Ameris	11	024529	Borracha superior Ameris
3	024521	Tampões Conj. para terminal e cassete Ameris	12	022223	Borracha inferior Ameris
4	024522	Conj. Sliders braços Ameris	13	022990	Conj. de braços
5	024524	Kit perfil anterior 4M Ameris	14	024162	Perfil protetor de tecidos de PVC Ameris
6	024523	Kit perfis posterior 4M Ameris	15	022576	Bucha de nylon Ø80 oco Ø14 e rolamento
7	024526	Telhado Inferior LED Ameris	16	030569	Pino suporte cápsula eixo 78
8	024527	Tampões para telhado LED Ameris	17	022807	Tubo de enrolamento Ø80
9	024525	Telhado Inferior			

Classificação ao vento EN 13561:2004+A1:2008

Saída	Linha														
	2,50	2,75	3,00	3,25	3,50	3,75	4,00	4,25	4,50	4,75	5,00	5,25	5,50	5,75	6,00
1,85	1	1	1	1	1	1	1	1	1	1	1	1	1	1	1
2,10		1	1	1	1	1	1	1	1	1	1	1	1	1	1
2,60				1	1	1	1	1	1	1	1	1	1	1	1
3,10						1	1	1	1	1	1	1	1	1	1
3,35							1	1	1	1	1	1	1	1	1
3,60								1	1	1	1	1	1	1	1
4,10										1	1	1	1	1	1

Classe 1 ≈ 28 Km/h

O seu mundo,
o nosso universo.